

Northumbria Law School

Undergraduate, Postgraduate and Professional



Welcome

Welcome to Northumbria Law School, one of the most innovative law schools in the UK.

Northumbria is justifiably renowned for its unique undergraduate courses, and for the excellence of its range of vocational and postgraduate courses.

What makes Northumbria Law School so distinctive is its focus on the learning of law in its practical context. Approximately 70% of our academic staff are qualified as solicitors or barristers, with considerable experience of practise. We are committed to ensuring that our students learn law in a way that equips them for their professional roles.

The practical expertise of our academic staff and the focus on excellence in teaching, ensures that the courses we offer are of a consistently high standard, designed to meet the practical needs of our students. We are constantly developing our courses to make the most of new technologies and to respond to the changing requirements of the legal profession.

Our unrivalled law clinic, the Student Law Office, is the largest of its kind in the UK, where our students represent members of the public working on real legal problems. In recognition of this, Northumbria University was

awarded The Queen's Anniversary Prize for Higher and Further Education for the outstanding community work of its Student Law Office.

The intake of students across all of our courses reflects the national and international reputation of the Law School – with students from across the UK and from all other major common law jurisdictions. Our students comment on the high levels of support and encouragement from staff and the commitment by the School to supporting their studies.

By making full use of e-learning and other modes of distance learning provision, we have designed courses that support full-time students, while opening up access to qualifications for students who have work or life commitments which mean that they need the flexibility of part-time and distance learning studies.

We hope to see you in the near future.



Contents

Academic Excellence at Northumbria Law School	2
Research at Northumbria Law School	3
Outstanding facilities	5
Student Law Office	6
Must have experience	8
Student experience	10
Careers support	12
Will you follow in the footsteps of our graduates?	15

UNDERGRADUATE

Undergraduate Law courses at Northumbria	17
LLB (Hons)	18
M Law Exempting	19
M Law Exempting (Bar Professional Training Course)	19
LLB (Hons) Law with Business	20
LLB (Hons) Law with International Business	20
Full-time module information	21
LLB (Hons) Open Learning	22
Certificate in Mental Health Law and Practice	23
Undergraduate admissions information	24

POSTGRADUATE

Postgraduate Law courses at Northumbria	27
LLM Commercial Law/International Commercial Law/ International Trade Law Full-time	28
LLM Bar Practice	30
Distance learning postgraduate courses	31
Distance learning support	32
LLM Advanced Legal Practice	33
LLM Commercial Law/International Commercial Law/ International Trade Law	35
LLM Employment Law in Practice	36
LLM Information Rights Law and Practice	37
Master of Laws	38
LLM Medical Law	39
LLM Mental Health Law	40
Professional Practice in Law (Mental Health Law) ...	41
Postgraduate Certificate in Business Law	42
Postgraduate Certificate in Data Protection Law and Information Governance	43

PROFESSIONAL

Graduate Diploma in Law (GDL)	44
Legal Practice Course (LPC)	46
Bar Professional Training Course (BPTC)	48
Advice and information	50
Useful contacts	51

Academic excellence at Northumbria Law School

We are the largest law school in the North East of England with purpose-built modern facilities including a court room, a specialist law practice library and an award-winning Student Law Office.

Highlights of our excellence:

- We hold a national and international reputation for **excellence in legal education** having won multiple awards: we are a **three-time winner** of the LawWorks and Attorney General Student Pro Bono Awards for Best Contribution by a Law School. The highly prized award recognises dedication to clinical legal education and pro bono legal assistance. In 2016 we were shortlisted for **Legal Education Provider of the Year** in the inaugural Solicitors Journal Awards.
- Our unrivalled law clinic, the **Student Law Office**, is the largest of its kind in the UK where you can represent members of the public working on real legal problems.

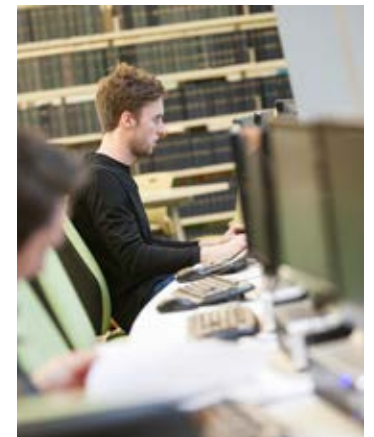
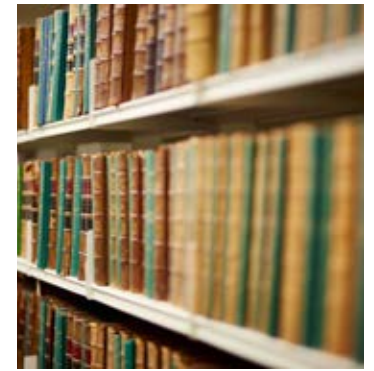
Northumbria University was awarded **The Queen's Anniversary Prize** for Higher and Further Education for the outstanding community work of its Student Law Office.

- You will be taught by experienced academics and legally qualified staff so you can benefit from our **close links to the legal profession**.
- Our undergraduate programmes have a **practical focus**, offering real world experience.
- Our **lively student community** encompasses a range of societies, projects, extracurricular opportunities and social events.
- We offer **several European student exchanges** including Germany, Spain, Sweden and the Czech

Republic as part of the Erasmus Exchange Programmes.

- We offer national and international **placement opportunities**.
- We have a **highly developed online materials platform** with easily accessible and content-rich webcasts covering core legal subjects. Mobile learning options are continually enhanced.

Discover more
northumbria.ac.uk/law



Research at Northumbria Law School

The Law department embraces diversity and breadth of research interests.

The expertise of our staff enables the Law School to offer a wide variety of specialist modules and options. Approximately 50% of research outputs have been judged to be 'internationally excellent' or 'world-leading'. Our academics are therefore at the cutting edge of current legal issues, which enhances your learning experience, giving you the very latest understanding of key legal issues.

Our flagship research area is the Centre for Evidence and Criminal Justice Studies, which brings together a wide variety of staff research

interests ranging from youth justice and mentally vulnerable offenders to forensic evidence and the cross-border transfer of criminal justice data.

Other key research areas include Legal and Professional Skills and Law and Society, in addition to research clusters which bring together staff who share research interests in animal rights, information rights, sports law, commercial and corporate law, and gender and sexuality.

At the same time as encouraging collaborative and interdisciplinary research, whether from a national,

international or comparative perspective, the Law department is also the academic home to several individual researchers with established national and international expertise in their chosen fields, including international human rights, Islamic legal tradition and post conflict justice and law and development in Pacific Island states.

Discover more

northumbria.ac.uk/nlsresearch



Outstanding facilities

Northumbria Law School is based within a £70million purpose built building, housing modern teaching, study and social space.

Here is a snapshot of some of our outstanding facilities that will bring your learning to life:

- Northumbria Law School is home to the internationally renowned and **award winning Student Law Office**, where law students participate in a legal advice and representation scheme on behalf of clients as part of their academic and professional development. The service is run as a full legal service just like any other firm of solicitors. Practising lawyers closely supervise the students' work and have overall responsibility for ensuring that clients receive a professional service.
- We have a **specially designed courtroom** equipped with DVD recording, enabling students to gain real-life exposure to what they can expect to experience in a courtroom scenario. This allows students to develop their practical advocacy skills and stage mock trials.
- You will have access to a specialist **Law Practice Library** which contains practitioner materials, journals and law reports.

- You will enjoy a **dedicated suite** of lecture theatres, teaching rooms and IT labs where you can work in groups or independently. There is free Wi-Fi throughout the University.
- The **e-learning portal** provides you with electronic access to lecture, seminar and workshop activities, directed learning, materials and tests, up to date course announcements, online discussion groups and bulletin boards. Available 24 hours a day, 7 days a week, all materials are regularly updated by module tutors and programme leaders.
- The Law School contains a **Starbucks outlet, delicatessen and cafeteria** to keep you fuelled throughout the day.
- Our **Student Employability Centre** supports employability through learning experiences such as volunteering, placements and internships.
- In the 2015/16 Times Higher Education Student Experience survey our University Library ranked as **joint 1st in the UK**. It boasts half a million books, 30,000 journals and 300 databases.

Student Law Office

Practical learning is central to our degrees. In our award-winning Student Law Office our students run real cases for real people, as an integral part of their studies.

Our students deal with cases in a wide range of areas of legal practice including:

- Criminal appeals – students have presented cases to the Court of Appeal and the Criminal Cases Review Commission.
- Housing law – covering hearings in the County Court on matters such as disrepair and repossession.
- Civil disputes - including areas as diverse as contract cases, inquests, and criminal injuries compensation.
- Family law
- Employment law - students have conducted cases at the local employment tribunal and have advised clients at the Employment Appeal Tribunal and the Court of Appeal.
- Welfare benefits - students not only run cases at local tribunals, but advise on judicial reviews and make applications to the European Court of Human Rights.
- Business - students advise businesses and charities on matters including commercial, corporate and intellectual property issues.

Examples of our successes include:

- The overturning of an unsafe conviction for robbery and the award of £170,000 compensation.
- A successful challenge in the Court of Appeal on the nature of modern apprenticeships, affecting over 300,000 people.
- Friendly settlement at the European Court of Human Rights in Strasbourg of challenges to the discriminatory



welfare benefits regime for widowers.

- Representation of a client in a Criminal Injuries appeal, for psychological injury after a family member had been the victim of a violent crime. Relying on extensive case law, the case was successfully argued and the client was awarded £15,400.

Through running real cases our students have the opportunity to develop skills as lawyers that most law students will not begin to learn until they enter into training contracts or pupillages. This enables our students to go into practice with high quality legal skills. They interview clients, research the law, provide advice, and where necessary they draft the court

or tribunal documents and represent the clients at the court hearings. In doing this work, our students are supported by practitioner members of Law School staff who supervise every aspect of their work, helping the students to learn from the experience. Both students and their future employers tell us that it is the best possible training for entering into practice as a lawyer, and clients tell us how impressed they are by the commitment and the energy of the students who handle their cases.

Working in this legal environment can also develop excellent connections with solicitors and barristers in private practice, who are invariably enormously impressed by the work that our students do.



Award-winning clinical legal education

The Student Law Office has an international reputation for excellence. Northumbria University has been awarded a prestigious Queen's Anniversary Prize for Higher and Further Education for the exceptional work of its Student Law Office. The Prize is the highest form of national recognition open to a UK academic or vocational institution and is awarded in recognition of work judged to be of outstanding excellence and with positive impact. It has won a number of awards and accolades including the UK National Training Award, three Attorney General Pro Bono Awards, Halsbury Legal Award 2013 and two Law Society Excellence Awards. In addition, it was shortlisted for Law

Firm of the Year by Newcastle Law Society and reached the finals of The Lawyer Awards 2012 and the North East Business Awards 2013.

Northumbria Law School has operated a programme of clinical legal education since 1980 and is one of the founding members of the Clinical Legal Education Organisation and publishes the International Journal of Clinical Legal Education. The Student Law Office has an international visiting professor programme which brings clinicians from leading international universities, including Yale Law School, to share their expertise with our students.



THE QUEEN'S
ANNIVERSARY PRIZES
FOR HIGHER AND FURTHER EDUCATION
2013



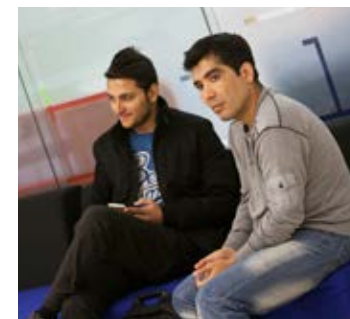
Must have experience

At Northumbria Law School, we encourage every undergraduate student to engage in a real-world experience during their course. This can be via a work placement or a study abroad opportunity.

Study Abroad

Our undergraduate courses offer the opportunity to study abroad for one semester, or a full year depending on the specific course of study.

Studying in a foreign country is an exciting, challenging and ultimately rewarding experience. It will boost your personal development, increase your confidence and provide you with once in a lifetime experiences. We have extensive partnerships with European institutions including Spain, France, Sweden, Czech Republic and Germany.



Placements

Working with colleagues or experienced practitioners in workplace settings offers students the opportunity to further enhance their personal subject knowledge and skills in order to achieve their potential.

Our LLB and Law with Business/ International Business programmes offer the opportunity to undertake a year-long placement as part of the course. Our placements are run in partnership with Newcastle Business School (part of the Faculty

of Business and Law at Northumbria University). Newcastle Business School is the biggest provider of one-year placement students in the region, placing approximately 200 students each year, across all business disciplines.

Students will be supported in applying for placements via the dedicated Student Employability Centre. Previously our students have undertaken placements in a wide range of organisations including John Lewis, Walt Disney World, 20th Century Fox, Nissan and GlaxoSmithKline.

Student experience

We strive to provide the best possible experience for our law students. We endeavour to support your development and celebrate your success. There are a range of activities and initiatives to take part in to ensure your experience is memorable and enjoyable.

Grey Society

The Grey Society was founded over 40 years ago by a group of law students who wished to have more of a say about student affairs. The Society has now grown to be the biggest at Northumbria University with nearly 600 members. The aim of the Society is to bring law students together to ensure interaction between the year groups. This is done through a range of both academic and social events.

Mock Trial Society

The Mock Trial Society is a student run society where law students deliver mock trials in the School's own courtroom, playing the roles of advocates, witnesses, jurors and judges. More than 100 students have taken part in the Society's mock trials.



Student Think Tank

The Student Law Think Tank is primarily involved in responding to consultation papers put forward by government bodies such as the Law Commission on areas of law reform that students feel passionate about.

Other activities of the Think Tank involve organising guest lectures on areas of law that are being or need to be developed and to suggest reform to government officials on areas of law where there is not yet an open consultation. This society is an opportunity for students to use their voice and express their opinions in the policy making process within the UK.

Debating Society

The Debating Society is a University society organised by law students. Members learn the fundamentals of debating including public speaking, persuading an audience, countering arguments and so on. They have the opportunity to participate in a wide range of debates and competitions as proposers, opposers, judges, and participating audience members. It is a great way of finding out about topical issues, making new friends and developing valuable skills for the future.

Human Rights Society

Members of the Human Rights Society learn about current human rights violations around the world and get actively involved in campaigning against them.

Mooting

Mooting is a mock courtroom advocacy exercise involving two teams of two students representing opposing sides of a fictitious legal case (the 'moot'). The students are required to research the points of law in support of and contrary to their side of the case and then submit their case in a mock courtroom to a judge, who will be either a member of academic staff, a legal practitioner or a senior student with mooting experience. Mooting has been run as a non-compulsory exercise for many years at Northumbria, at both internal and inter-varsity level with the opportunity to participate in international moots abroad. Many students have found that it enhances their legal research and advocacy abilities as well as being an enjoyable competitive exercise.



Ben Hoare Bell Contribution Roll

The Contribution Roll is an initiative which celebrates the excellent contribution made by law students by way of extra-curricular activities, student representation, involvement in societies and many other ways. Students are nominated by staff and fellow students and the successful candidates are selected from a shortlist by a judging panel. Winners of the Contribution Roll, sponsored by Ben Hoare Bell Solicitors, are invited to attend a special ceremony to celebrate their achievement.

Bond Dickinson Honour Roll

The purpose of the Honour Roll is to celebrate undergraduate academic achievement. Sponsored by Bond Dickinson, top performing students are invited to a drinks reception at the firm's Newcastle office and can network with solicitors and trainees.

Ward Hadaway Bursary

Ward Hadaway offers two exceptional undergraduate law students a bursary of £1,000 each towards the cost of their studies in the second and third year of their M Law Exempting degree. During each of those years, the two bursary students will also carry out four weeks of paid work experience at Ward Hadaway's offices at Newcastle's Quayside and in the heart of Leeds and, while a training contract will not be guaranteed, the students will be offered a place at an assessment centre and a final interview.

Irwin Mitchell Scholarship

This annual scholarship is generously made available by national firm Irwin Mitchell. The sought after scholarship supports a placement in an overseas law clinic to help provide access to justice. The current placement is offered at City University New York and has previously taken place in Australia.

Prizes

There are also an extensive range of prizes available for academic achievement across all courses sponsored by law firms and other organisations. Many prizes take the form of valuable work placements.

Guest Lectures

We regularly invite high profile legal professionals and academics to Northumbria Law School to deliver stimulating lectures and share their experiences of the legal profession with our students and staff. Previous speakers include the Director of Public Prosecutions and a Supreme Court Judge.

Woon Bursaries

The Woon Foundation Scholarships were established by Wee Teng Woon, a graduate of Northumbria and long-time supporter of our law students. For each year of the M Law Exempting course there is a scholarship of £1,000 which is awarded to the student who has the best performance in the preceding year and who satisfies certain financial criteria.

Careers support

Here at Northumbria we provide a comprehensive careers programme to ensure you fulfil your ambitions.

Our extensive careers programme offers regular sessions throughout your course

You will receive regular updates and information regarding our comprehensive careers programme and events, together with notification of any placement and employment opportunities.

Student Employability Centre

The Centre enhances students' learning experience and career prospects by promoting all types of experiential learning including volunteering, internships, placements, overseas study and business and law clinics, which have a very positive impact on student employability.

Talks by a wide range of legal practitioners about the different careers available in law

We provide numerous sessions from legal and professional practitioners explaining more about the type of work they do. So whether you are interested in commercial work, high street practice, legal aid work, in-house or local authority practice you can come and find out more about the job and ask questions of experienced lawyers in the field. Local firms often hold open evenings where our students can attend their offices, participate in a range of skills sessions and gain a flavour of what they do.



Practical sessions to assist you with applications and interviews

Your law qualification is a valuable gateway to a range of legal and non-legal careers. We therefore arrange talks by a range of employers and recruitment experts to explain how to navigate this process successfully. We provide guidance on completing applications for training contracts, vacation placements and pupillages as well as assisting you to prepare for interviews or typical assessment centre exercises for a range of careers.

One-to-one assistance with preparation of application forms, CVs and interviews

All students have their own guidance tutor. You will have regular meetings with your guidance tutor and will be

able to discuss with them your plans and application forms. Your guidance tutor keeps track of your progress, plans and interests through the year and will be able to write an informed and detailed reference for you if requested to do so.

Contacts with local and national firms and chambers

We have extensive links with local and national firms and chambers. Many of the teaching staff continue to practise and many more maintain links with the profession, with practitioners regularly contributing to the teaching sessions. You will be able to approach staff members who are up-to-date with the main issues facing legal practice and who have an extensive knowledge of the firms and Chambers you may be making applications to.

Experience of practice through the Student Law Office and its associated programmes

All undergraduate students and a limited number of postgraduate professional students have an opportunity to experience real legal practice through the Student Law Office. You will be advising and representing members of the public under the supervision of qualified members of staff and may even need to represent your client at court or tribunal.

The practice interview scheme

When you are invited for a job interview or to an assessment centre we can offer you a practice interview geared to the type of firm you have applied to and offer feedback to help you improve your performance. This will give you the chance to refine your interview technique and to see how you handle unexpected questions.

Support from specialist careers advisers in the University Careers and Employment team

We work closely with the University Careers and Employment team which provides specialist support in the form of employer presentations, up-to-date information, one-to-one advice and weekly drop-in sessions. They can also check through CVs and applications and can provide samples of the sorts of tests routinely used in the selection process for legal and related work.

Law, business and finance careers fair

As well as specific sessions provided by employers we host a careers fair attended by a range of employers including local and national law firms and chambers. It is a chance to network to find out more about the vast range of different career opportunities available with a law degree. Legal exhibitors who have

attended previous fairs include Allen & Overy, Ben Hoare Bell, Broad Chare Chambers, David Gray Solicitors, Bond Dickinson, Beecham Peacock, Irwin Mitchell, Ward Hadaway and Trinity Chambers.

The professional contact scheme

We maintain a register of trainees and qualified solicitors and barristers who have volunteered to offer advice and support to Northumbria students considering legal careers, so you can take advantage of their insights.

Continuing information after you complete your course

When you have finished your course you can remain on our careers register and we will inform you of any relevant vacancies and careers events.



37 PARK SQUARE CHAMBERS ADDLESHAW
 GODDARD ALLEN & OVERY ANDREW & CO
 BEECHAM PEACOCK BEN HOARE BELL BLM
 BHATT MURPHY BOND DICKINSON BURNETTS
 CARTMELL SHEPHERD CATHEDRAL CHAMBERS
 COLLEGE CHAMBERS CROWN PROSECUTION
 SERVICE DAVID GRAY SOLICITORS DELOITTE
 DERE STREET CHAMBERS DLA PIPER DWF
 ENTERPRISE CHAMBERS EVERSHEDS
 EXCHANGE CHAMBERS FOUNTAIN CHAMBERS
 GARDEN COURT CHAMBERS HAY & KILNER
 HICKMAN AND ROSE SOLICITORS HINE &
 ASSOCIATES HODGE JONES & ALLEN IAIN
 NICHOLSON INCORPORATION SERVICES LTD
 IRWIN MITCHELL KINGS BENCH CHAMBERS
 KK & CO SOLICITORS LANDMARK CHAMBERS
 LEGAL AID AGENCY LITTLETON CHAMBERS
 LOVELLS LUPTON FAWCETT MEIKLES
 SOLICITORS MINCOFFS MUCKLE NABARRO
 NATHANSON NEW PARK COURT CHAMBERS
 NO. 5 CHAMBERS NO. 6 CHAMBERS NO. 8
 CHAMBERS OLD COURT CHAMBERS OSBORNE
 CLARKE PINSENT MASONS PLOWDEN
 CHAMBERS PWC REFUGEE AND MIGRANT
 JUSTICE RICHMOND ANDERSON GOUDIE
 SCANLANS SINTONS THE ARMY LEGAL
 SERVICE THE COURT SERVICE TILLY BAILEY
 & IRVINE TRINITY CHAMBERS TROWERS
 AND HAMLINS VIRGIN MONEY WALKER
 MORRIS WALLERS SOLICITORS WARD
 HADAWAY WATSON BURTON WILBERFORCE
 CHAMBERS WYG ZENITH CHAMBERS

Will you follow in the footsteps of our graduates?

Law graduates are well placed to compete for a variety of jobs in law, as well as commerce, industry, financial services and the public sector, where they can use their intellectual and practical skills in a more general context. Graduates have obtained employment with a range of legal firms both regionally and nationally as well as in barristers' chambers and industry.

"It was fantastic to be taught by practising barristers, they were always helpful and approachable. Having managed to get pupillage in Newcastle, I now see many of them in Court!"

**Amanda Sehat, Barrister,
Trinity Chambers**

"There really is no substitute for the experience I gained in the months I spent in the Student Law Office, it allowed me to hit the ground running when I started work."

Neville Takiar, Partner, TT Law

"The Student Law Office offered a unique opportunity to gain insight into practising as a solicitor. The degree allowed me to graduate ready to become a trainee solicitor."

**Rachel Roberts, Partner,
Stowe Family Law LLP**

"As well as being taught by practising barristers, the course is practically focussed on supporting you to become a barrister. The whole thing is really hands on as a large part of the course is about doing the job and learning alongside your colleagues."

**Alistair Mills, Barrister,
Landmark Chambers**

"I feel that studying at Northumbria equipped me with a fantastic legal education and I am grateful for having had the opportunity to learn from the passionate and committed lawyers who encouraged me to foster the skills that law firms really value."

**Toby Brooks,
Solicitor, Hempsons**

"I was Highly Commended Junior Lawyer of the Year at the Law Society's Excellence Awards 2010. I feel that it just shows what you can achieve after you have been given such an excellent head start by Northumbria Law School."

**Gemma Vine, Solicitor,
Lester Morrill**

Undergraduate Law courses at Northumbria

Our courses are designed for those who aspire to qualify as a lawyer and people who want a legal qualification to enter a range of professional careers.

All our undergraduate courses satisfy the requirements of a Qualifying Law Degree (QLD), covering the compulsory areas of legal knowledge. A QLD is the academic stage of qualification for solicitors and barristers.

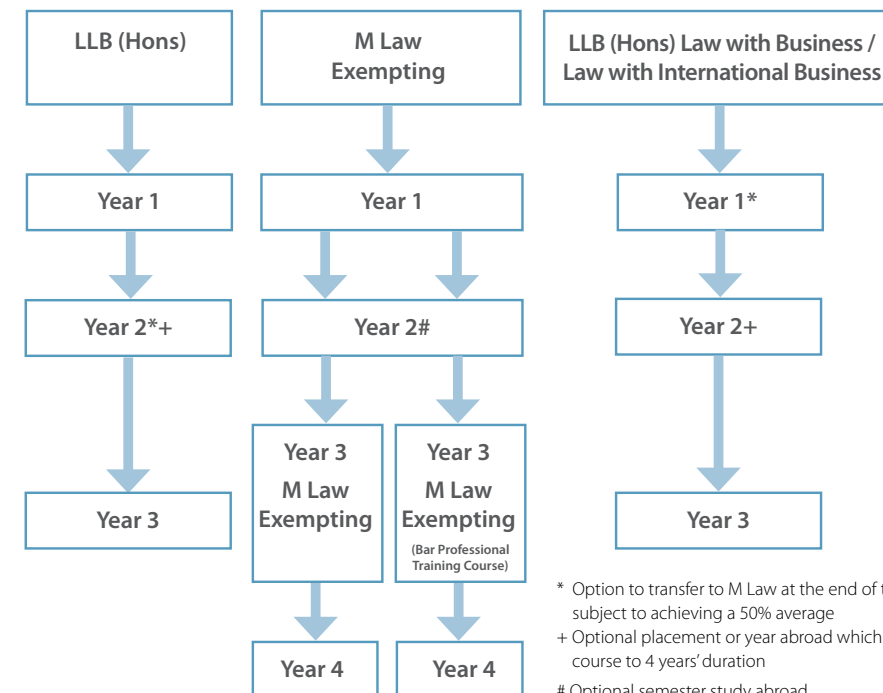
For those wishing to study for three years there is a traditional LLB (Hons) route which is designed for those looking for a stimulating and engaging law degree. It provides a thorough grounding in legal principles and also provides scope to select a range of optional modules, tailored to your interests.

The School's pioneering 4-year integrated M Law Exempting degrees enable students to combine academic and vocational stages of legal education in one course, at Master's level. The unique M Law Exempting degrees are specifically designed for aspiring legal practitioners and those wishing to enter professional roles, incorporating the knowledge and professional skills needed to succeed as a lawyer.

The Law with Business/Law with International Business courses involve studying core law subjects and a variety of business modules,

enabling students to develop an understanding of the interrelationship between law and business. You also have the opportunity to put your knowledge and skills into practice advising clients in the Business Clinic or Student Law Office. In the Business Clinic you will provide consultancy advice to businesses including SME's, multi-national and not for profit organisations. These programmes are delivered in conjunction with Newcastle Business School, which was awarded Business School of the Year at the Times Higher Awards 2015.

How our full-time degrees work



LLB (Hons)

Mode of study Full-time

Duration 3 or 4 years

A Qualifying Law Degree either three years or four years with study abroad or a placement year.

Law is a diverse area impacting on all aspects of life. This course is designed for those looking for a stimulating and engaging law degree, providing a thorough grounding in legal principles in their practical context. In addition to the compulsory areas of legal knowledge, you will study specialist modules based on your interests and you can opt to undertake an extended research project to develop expertise in a legal field. Our research active and legally qualified academics use interactive lectures and workshops in conjunction with varied assessment methods to enhance your knowledge and skills. You will have the opportunity to work in the Student Law Office, putting your legal knowledge into practice in a real world environment. You can also choose to study abroad or undertake a placement, lending an international flavour to your studies, and learn about different legal jurisdictions.

Another option is to study for a QLD but with a business pathway which allows three business modules to be studied in place of specialist law options.

Whichever route you choose you will develop professional transferable skills including research, public speaking, commercial awareness and team working, qualities highly regarded by both legal and non-legal employers.

On graduating you can choose to undertake further study to pursue a career as a solicitor or barrister or use your highly regarded qualification to enter employment. Our graduates pursue successful careers in sectors including law, finance and business management.

Should you decide that you wish to pursue a career as a solicitor or barrister it is possible to transfer to M Law Exempting at the end of year 2, subject to achievement of an average of at least 50%.

"The degree instils commerciality which certainly gave me an edge early in my career and is something I now actively recruit for."

Holly Armstrong, LLB (Hons) graduate, Operations Manager for George F. White & Director for GFW Letting



M Law Exempting

Mode of study Full-time

Duration 4 years

An integrated Master's course with exemption from the Legal Practice Course. Optional semester study abroad.

Our pioneering 4-year degree equips you with highly developed legal knowledge and transferable skills suitable for professional life in law and beyond. You will learn how the law works in practice and how to apply legal information. Our experienced academics and legally qualified staff adopt a practical approach, bringing the law to life. Interactive lectures and workshops enrich your understanding of legal principles and skills in a realistic context. In the multi award-winning Student Law Office you represent real clients, ensuring

you are equipped to deal with the demands of legal practice. You will develop specialist skills in readiness for entering the legal profession. You will graduate with the attributes needed to succeed as a solicitor and with transferable skills, such as critical thinking, team work and written communication skills valued by a range of employers. Graduates have secured training contracts with leading national and regional law firms and are also well suited to a range of careers in business, management and finance.

"The practical focus of the degree definitely helped me to secure work in the legal profession. It gave me first-hand experience of running files, dealing with clients and undertaking advocacy at court which is very rare as a student."

Ronagh Craddock, M Law Exempting graduate, Trainee Solicitor at Ben Hoare Bell LLP

M Law Exempting (Bar Professional Training Course)

Mode of study Full-time

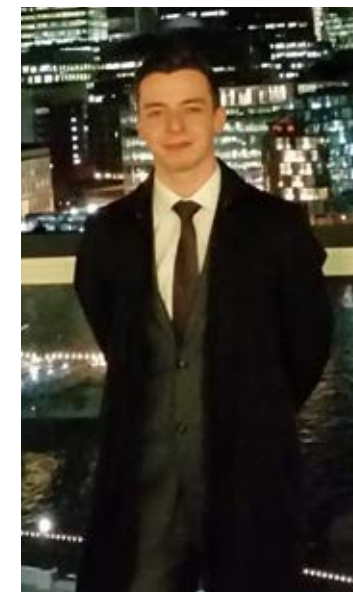
Duration 4 years

An integrated Master's course with exemption from the Bar Professional Training Course. Optional semester study abroad.

For those considering a career as a barrister, this is the course for you. Across years three and four of the course, you will complete both your Qualifying Law Degree and the Bar Professional Training Course (BPTC). On successful completion, you will also be awarded the Masters in Law and called to the Bar by one of the four Inns of Court. It is the only undergraduate course of its kind in England and Wales and has the approval of the Bar Standards Board (BSB). You will develop the core skills of a barrister including advocacy, conferencing and opinion writing.

The Student Law Office is one of several options in year four where you will work with real clients under the supervision of a practising barrister. The majority of the Bar teaching team are qualified barristers. We provide many opportunities whilst on the course to gain work experience with barristers' chambers (mini pupillage) and the judiciary (marshalling).

Graduates of this course have secured pupillage and tenancy at both the independent and employed Bar and are also well suited to a range of careers in business, management and finance.



"I have benefited from the collective experience of professional tutors who are or have been in legal practice."

Sean Mennim, M Law Exempting (BPTC) student

Please note: Admission to this route is not guaranteed and is dealt with on a competitive basis.

Law with Business

LLB (Hons)

Mode of study Full-time

Duration 3 or 4 years

A Qualifying Law Degree either three years or four years with study abroad or a placement year.

This course combines two complementary subject areas to provide students with a detailed knowledge of the law and the operation of businesses. Students on this course will gain an appreciation of the world of business and an understanding of major business theories. They will also develop a knowledge and understanding of the

interrelationship between law and business and associated concepts such as commercial and business awareness. The course will therefore be of interest not only to those considering a career as a solicitor or barrister, but also to anyone with an interest in working in business, either as part of an organisation or as an individual entrepreneur. A key benefit

of this course is that students will be developing legal knowledge and awareness alongside the knowledge and skills required by many other employers in today's competitive job market.

It is possible to transfer to M Law Exempting at the end of year 1, subject to achievement of an average of at least 50%.

Law with International Business

LLB (Hons)

Mode of study Full-time

Duration 3 or 4 years

A Qualifying Law Degree either three years or four years with study abroad or a placement year.

With the growth in the internationalisation of business this course will be of benefit to students who either want a career with a multinational company or who plan to work in a business organisation outside the UK. The course contains specialist modules in aspects of international business. The degree examines the international business environment, introduces students to the global forces shaping international business and considers the macro business environments of different regions and countries, including issues such as globalisation, political systems, major world economies and the formation of trade blocks.

Students' skills are developed to enable them to analyse various worldwide and international business environments and how these affect the strategic development of industries, markets and organisations. The course will provide excellent and essential international business awareness for students who go on to practise as lawyers. It will also provide essential legal awareness for those who proceed to work in a business environment, whether in the United Kingdom or overseas.

It is possible to transfer to M Law Exempting at the end of year 1, subject to achievement of an average of at least 50%.

"There are various activities to engage with, the support is unbelievable, and the course is taught in a very engaging way with modern examples interlinked."

Vickie Patel, LLB (Hons) Law with International Business student

Full-time optional modules

During the courses, students select a number of law options, allowing them to pursue individual interests.

Options may include:

- American Law
- Animal Law
- Child Care Law
- Civil Liberties
- Commercial Contracts
- Employment Law
- Family Law
- Gender, Sexuality and the Law
- Housing Law
- Human Rights and Law Reform
- Inquests
- Intellectual Property Law
- International Human Rights
- Law and Literature
- Law of International Trade
- Legal History
- Medical Law
- Sports Law
- Trials of Dissenters

The wide range of optional subjects enables students to specialise in 'high street' or 'commercial' areas or simply choose subjects they find interesting.

Please note: not all optional modules will be available to all students every year.

Law with Business/Law with International Business modules

In addition to the core legal subjects, these courses also incorporate a range of key business modules (dependent on course), including Global Business Environment, Human Resource Management, Growth Strategies and Resourcing, Sustainable Strategies, Contemporary Issues in International Business and the opportunity to participate in the Business Clinic or Student Law Office.



Open Learning

LLB (Hons)

Mode of study Distance Learning

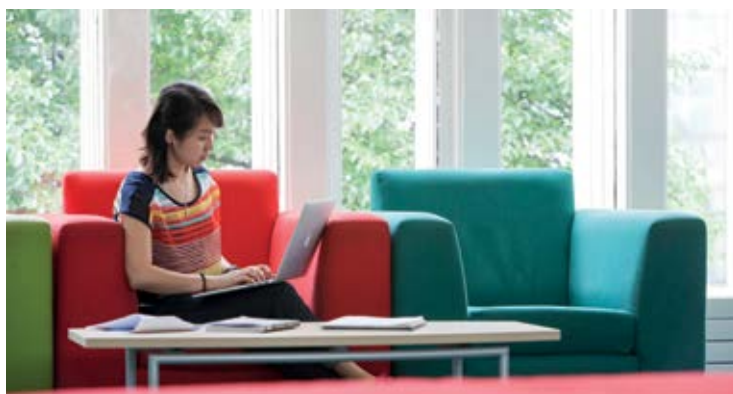
Duration 4 - 6 years

By undertaking a law degree on a distance learning basis, students have the flexibility to undertake study at their own time, and at a place that is most convenient to them. Students are not tied to attending classes on particular days at particular places.

The LLB (Hons) Open Learning degree is a 4 – 6 year course which is studied via distance learning. There is no attendance requirement for the course therefore it is ideal for students who are unable to attend the University to study due to work or personal commitments. Learning is developed through study materials delivered over the internet. Each module has a set of materials, a study schedule and answer guidance available on the eLearning Portal. Webcasts are used across the core modules. These are short videos which explore essential legal aspects of a particular legal subject, and students are able to use them to navigate through a series of written and recorded materials, with access to linked documentation and other related materials. PowerPoint presentations, notes, updates and useful assessment guidance are also posted on the module sites. You will also have access to legal databases which allows you to read primary legal sources such as legislation and case law, as well as secondary legal sources such as journal articles and commentaries.

What support is given to Open Learning students?

Each module has a module tutor who is responsible for delivering the teaching materials via the eLearning Portal. Module tutors are contactable by telephone, email or, if a student



is based in the UK and is able to visit Newcastle, on a face-to-face basis. The study materials have been designed to enable students to obtain feedback and advice on written work that they submit. This is an integral part of the learning experience and students are encouraged to submit work of this type. The course is supported by a programme leader. They will be able to assist students with a range of queries, for example, how a student should proceed if they have concerns about undertaking scheduled examinations or coursework. Additionally, students can contact the Open Learning Administration Team who have a wealth of experience in distance learning support. With the support of experienced and knowledgeable staff at the end of the telephone or email, and a wealth of interesting and informative materials available via the internet, distance learning can offer much more than traditional face-to-face study.

What will I study on the course?

The course satisfies the requirements of a Qualifying Law Degree (QLD), covering the compulsory areas of legal knowledge. A QLD is the academic stage of qualification for solicitors and barristers. Your course will be cover the seven foundation areas of knowledge including; English and European legal systems, contract law, criminal law, land law, equity and trusts, tort law and public law. You will also have the opportunity to study more specialised legal options in areas such as company law, employment law, evidence, medical law and jurisprudence. (The availability of options in any year will depend upon there being sufficient student demand).

Mental Health Law and Practice

Certificate

Mode of study Distance Learning

Duration 1 year

The Certificate in Mental Health Law and Practice has been designed to provide professionals engaged in the delivery of mental health services with an understanding of mental health law, and the ability to apply that knowledge to every day scenarios.

Upon successful completion of this course you will be able to demonstrate knowledge and understanding of key provisions of mental health law and have an appreciation of the consequences of an unlawful application of mental health law. You will be able to use a range of basic legal materials, understand the difference between primary and secondary legal sources and distinguish legal rules from good practice. You will be able to analyse a

range of practical situations involving persons suffering from mental disorder and identify the legal issues which arise. You will be able to discuss, explain and apply the basic provisions of mental health law in writing and justify the conclusions that you reach. You will be able to analyse whether policies in your own workplace comply with the law. Through study day discussion you will develop greater understanding of current mental health practice.

The successful completion of this course will demonstrate your ability to work independently and to effectively manage your own time. Not only will you be able to use the skills, knowledge and understanding you acquire within your working environment, successful completion of this unique course will provide you with an academic qualification which demonstrates your knowledge and understanding of mental health law, thus improving your employability.



Undergraduate admissions information

Full-time undergraduate courses

Applicants should possess five GCSEs at grade C or above including English Language and Mathematics, and also one of the following:

- GCE and VCE Advanced Level 128-136 UCAS Tariff points for M Law and 120-128 UCAS Tariff points for LLB/Law with Business/Law with International Business. General Studies is accepted.
- Edexcel/BTEC National Diploma Distinction, distinction, merit.
- Scottish Highers/Advanced Highers BBBB at Higher, BBB at Advanced Higher.
- Irish Highers AABBB.
- QAA-recognised Access programme Full Access Award. Some units must be achieved at distinction grade, others at merit.

Students studying for qualifications other than those listed are welcome to contact our Admissions Office for advice on entry requirements.

UCAS codes

- LLB (Hons) M101
- M Law Exempting M100
- M Law Exempting (Bar Professional Training Course) M100
- LLB (Hons) Law with Business M1N1
- LLB (Hons) Law with International Business M1N9



Open Learning course

The LLB (Hons) Open Learning course is open access and is designed to encourage wider access to those who do not have traditional educational qualifications. Applicants must be able to show a high level of motivation, discipline and the necessary intellectual ability required to complete the degree programme. This may be demonstrated by:

- Relevant experience, e.g. work, community activities
- Formal educational qualifications

Applicants for whom English is not their first language, should have an English Language score of 6.5 on IELTS (or equivalent) or have previously studied in English.

Mental Health Law and Practice Certificate

There is no requirement to have obtained previous formal qualifications as a pre-requisite to study on this programme. You should use the personal statement on your

application to illustrate your abilities, aptitudes, skills, qualifications and experiences. It is University policy to recognise a wide variety of evidence, and if you are interested in applying to join this programme you are strongly encouraged to contact the programme leader to discuss your application.

Application procedure

Our courses recruit through the Universities and Colleges Admissions Service (UCAS): find out more at ucas.ac.uk.

Applications for places on the LLB (Hons) Open Learning course and the Mental Health Law and Practice Certificate should be made online via our website northumbria.ac.uk/courses.

Any questions?

We appreciate that there is a lot of information to take in concerning our entry requirements. For more detailed course information please visit northumbria.ac.uk/courses

Admissions

T: +44 (0)191 227 4453
E: et.admissions@northumbria.ac.uk

International Admissions

T: +44 (0)191 243 7906
E: er.internationaladmissions@northumbria.ac.uk



We encourage you to attend one of our Open Days to find out more.
Please visit northumbria.ac.uk/opendays for dates



Postgraduate Law courses at Northumbria

Northumbria Law School has been offering LLM courses since 1991 when it started with the innovative LLM in Advanced Legal Practice.

Since that time our portfolio of courses has expanded and we now offer a mix of full-time and distance learning courses in subjects as varied as International Trade Law and Information Rights Law. Each course has been carefully designed to include a suitable mix of compulsory and optional taught modules which

students must successfully complete before progressing on to the project stage of the LLM. The precise content and mix of modules for each course is listed below. The project stage, which is common to all our LLM courses, provides you with the opportunity to undertake research into your chosen area of study, supported by an

academic supervisor within the Law School. On successful completion of the taught modules and a project, you will qualify with an LLM.

We have over 1,500 LLM graduates across the UK and worldwide, many of whom have gone on to use their LLM success to change or enhance their careers or to embark on further study.

Commercial Law

International Commercial Law

International Trade Law

PG Dip/LLM

Mode of study Full-time

Duration 1 year

We offer three full-time commercially orientated LLM courses:

- LLM Commercial Law
- LLM International Commercial Law
- LLM International Trade Law

Each full-time course commences in September and students are expected to complete their studies within 12 months. The course begins with an induction period. The induction course is essential as it is designed specifically to prepare you for the remainder of your studies. On completion of the induction course you are expected to study your compulsory and optional subjects until May of the following year.

Each course comprises of six taught modules. All students are required to study the Legal Research module. This involves group work and peer review of formative written work. You are required to participate in a series of tasks to be successful in this module.

The academic year is divided into semesters, of approximately twelve weeks, during which you will study three modules. The benefit of this approach is that you can stagger your assessment throughout the academic year. The modules are taught by a mix of traditional lectures, workshops and seminars. The lecturers on the course have a wealth of experience in their subject areas and are keen to encourage you to participate in a range of extra-curricular activities.



Each module (other than Legal Research) is assessed by way of a written assignment which may take the form of a critical essay or problem-based exercise. You will also have the opportunity to submit formative assessed work beforehand, in order to develop your legal writing skills.

During the second semester students are invited to submit their project proposals after which they will be allocated a project supervisor. In addition, all full-time students are allocated a guidance tutor who can help provide advice and support on an individual basis.

Entry requirements

All of our Masters courses (with the exception of the LLM Advanced Legal Practice and LLM Bar Practice) are open to lawyers and non-lawyers.

The standard entry requirements for the courses are either a degree in law or another discipline or other relevant professional qualifications. Students may also be considered for enrolment on certain courses if they can demonstrate sufficient work-related experience.

The standard of English language competence required for entry to the courses is: TOEFL paper test score of 600 or TOEFL computer test score of 250, or IELTS score of 6.5.

Applications

Applications can be made online via our website northumbria.ac.uk.



	LLM Commercial Law	LLM International Commercial Law	LLM International Trade Law
Semester 1	Induction	Induction	Induction
	Legal Research	Legal Research	Legal Research
	International Sales Contracts or WTO	WTO	International Sale Contracts
	Company Law & Insolvency	Law of International Trade	Carriage of Goods
Semester 2	Two from: International Finance or Intellectual Property or Transnational Competition Law or International Dispute Resolution	Three from: International Finance or Intellectual Property or Transnational Competition Law or International Dispute Resolution or Commercial Contracts	Two from: International Finance or Intellectual Property or Transnational Competition Law or Commercial Contracts
	Commercial Contracts		International Dispute Resolution
Semester 3	Projects	Projects	Projects

Bar Practice

LLM

Mode of study Full-time

Duration 2 years

This innovative full-time Masters course offers you the opportunity to work towards an LLM qualification and a Postgraduate Diploma in Bar Professional Training over two years.

The course offers a different pathway to students who would like to attain an award under the Bar Professional Training Course but would, at the same time, like to enhance their legal research skills through the completion of a project. Students who wish to qualify as barristers are required to complete the Bar Professional Training Course (BPTC). This LLM course provides vocational training across a range of subjects and skills necessary to enter pupillage, whilst simultaneously developing your knowledge and understanding of a specific area of law through your study under an LLM course.

The course commences in September of each year with an induction period. The induction course is essential as it is designed specifically to prepare you for the remainder of your studies. The induction period is followed by a compulsory Legal Research module. In addition, you are required to study the BPTC core subjects and skills which are divided over both Year 1 and Year 2 of the course. The LLM 'component' of the course requires you to undertake a project of 15,000–17,000 words on an area linked to an area of study under the BPTC. The project is submitted at the end of Year 2.

All BPTC core subjects and skills are taught by barristers, many of whom practice on the North Eastern circuit. During the course you will develop a range of essential skills, which include:

- Advocacy
 - Drafting
 - Opinion Writing
 - Conference Skills
 - Resolution of Disputes Out of Court
- Evidence, criminal litigation and civil litigation are also taught as discrete subjects, as well as being integrated with the main skill areas. All advocacy tutors are accredited by the Advocacy Training Committee to train students. Many are also accredited to deliver advanced advocacy training to junior practitioners and to train others to teach advocacy. All subjects and skills are developed through practical sessions, in which you will work on case studies and carry out a range of tasks typical of work in pupillage.

All students choose two specialist options. Current options include:

- Civil Practice
- Clinical Negligence and Personal Injury
- Chancery Practice
- Commercial Practice
- Criminal Practice
- Employment Practice
- Family Practice
- Student Law Office*

*Subject to maximum numbers

The BPTC is student-centred with skills taught in small groups. You are provided with individual feedback on each skill from BPTC tutors and Northumbria promotes the use

of critical self-reflection, which can dramatically improve your performance. This course aims to enable you to enhance your Bar qualification, knowledge, research skills and employability.

Entry requirements

Applicants must either have obtained a Qualifying Law Degree, passed the Graduate Diploma in Law or otherwise have satisfied the Bar Standards Board requirements to embark on the vocational stage of training. All students are required to join one of the four Inns of Court before they commence the LLM Bar Practice. Further information on the Inns of Court and qualification as a Barrister can be obtained from the websites listed at the back of this brochure.

Bar Course Aptitude Test

Applicants must pass the Bar Course Aptitude Test (BCAT) introduced by the Bar Standards Board (BSB) in 2012. The test is compulsory and requires prospective students to achieve a minimum standard as specified by the BSB. For more information please visit barstandardsboard.org.uk.

How to apply

All applications for LLM in Bar Practice, are made through a central online application system barsas.com

Students are advised to submit their application as early as possible due to strong competition for places on the course.

Distance learning postgraduate courses

Our distance learning courses are designed to provide professional people with the opportunity to further their academic career without having to make the commitment to full-time study.

We have been offering distance learning law courses since 1991 and we understand the needs of students who, because of professional and family commitments, need courses that are accessible and flexible but provide rigour and quality.

All of our distance learning courses are designed to be studied from home but we provide ample opportunities for you to maintain contact with the School, tutors and other students via optional study days and our online learning environment. Our courses are intended, as far as possible, to provide a flexible course of study.

All of our distance learning courses (with the exemption of Advanced Legal Practice, Business Law, Data Protection and Information Governance and Professional Practice in Law (Mental Health Law)) are validated as Linked Awards.

Each stage of the course is treated as a separate and distinct award – successful completion of the 60 credit Postgraduate Certificate stage, comprising three modules, is therefore an entry requirement for the Postgraduate Diploma stage and successful completion of the 60 credit Postgraduate Diploma stage, comprising three modules, is an entry requirement for the LLM stage. Completion of all three stages leads to the award of LLM.

The distance learning model that we have developed is based on experience and feedback from our graduates. For each taught module there are detailed study materials, written by an academic member of



an interface between students and their tutor and students are either required or may participate in online discussion boards. Module tutors also run a number of supportive "surgery" sessions during the module, via distance means such as Blackboard Collaborate.

Although our courses are distance learning we also offer the opportunity to attend an introductory study day/s in most of the core and optional modules. We endeavour to offer study days in most modules (subject to availability).

All Linked Award students are required to study the Legal Research module at the start of their course. This involves online group work and peer review of formative written work. Students are required to participate in a series of tasks in order to be successful in this module. Thereafter each module is assessed by way of a written assignment which may take the form of a practical problem or critical discursive essay.

On successful completion of the Certificate and Diploma stages, students are invited to submit their project proposal and, once accepted, will be allocated a project supervisor.

staff or an experienced professional lawyer. The study materials, which include a Teaching and Learning plan, seek to guide you through the content of the module but you are also expected to undertake extensive further independent reading.

In support of this you have access to a digital reading list and a wide range of legal databases including Westlaw and Lexis Nexis enabling you to access a wealth of legal information from anywhere in the world. Study materials and any supplementary materials are made available electronically via the University's eLearning Portal (known as Blackboard). This portal provides

Distance learning support



Northumbria Law School has a long tradition of providing distance learning tuition at postgraduate level to students across the UK and around the world. We have designed practical and innovative courses with a flexible approach to learning and teaching which are more suited to professional people with busy lifestyles.

Undertaking a postgraduate course on a distance learning basis gives you the flexibility to undertake study in your own time, at a place that is most convenient to you. You won't be tied to attending classes on particular days at particular places but will have the support of experienced and knowledgeable academic staff at the end of the telephone or on email. With a wealth of interesting and informative materials available via the University's eLearning Portal, distance learning can offer much more than traditional face-to-face study.

Library services

Under the UK Libraries Plus scheme, distance learning students benefit from borrowing access at our own University library as well as other participating libraries nationwide. The University has also set up a library and information website for part-time and distance learning students which provides information on inter-library loans, photocopying services and locating and accessing articles and cases. It also gives guidance on many other library services which have been specifically designed to assist distance learning students with their studies.

Student support

Students frequently praise the friendly atmosphere, and the high level of guidance and support that they receive from academic and administrative staff. Students are encouraged to contact staff as and when the need arises. The course leader is available throughout the course to meet with students and each module tutor will be able to provide answers to queries about the



module they are teaching. All students are allocated an individual guidance tutor who can be contacted by email, telephone, letter or in person to discuss progress in general, or any difficulties. Each module is supported by a digital reading list.

Digital learning

Northumbria Law School subscribes to a wide range of online legal databases to which students have access following enrolment. Direction is given in course materials on when to access law reports, legislation and journal articles from these databases.

Course leaders and module tutors utilise the web-based eLearning Portal to provide course materials and information, provide legal updates, maintain regular contact with students, for example through Blackboard Collaborate "surgery" sessions, and offer guidance, including assistance with legal research tasks.

Advanced Legal Practice

LLM

Mode of study Distance Learning

Duration 2 years

This innovative Masters course is designed especially for those who are qualified lawyers (solicitors, barristers or other internationally recognised equivalent) or those who aspire to become a legal practitioner.

The course provides the ideal opportunity for professional development in a specialist area of law. Students are expected to undertake in-depth study of an agreed legal topic under individual tutor supervision. The course starts in October each year and is taught via distance learning. The course is two years in duration but can be completed sooner.

The course focuses on legal research and coherent presentation of legal research in a written form. Students begin by completing a Legal Research module which is not assessed but is designed to update their writing and research skills. For the remainder of the course, students complete a project of between 15,000 – 17,000 words. The project is the sole assessed element of the course. It must concentrate on the law in England and Wales but, providing there is an appropriate tutor available to supervise it, its topic can be of the student's choosing and it can include a comparative study of international legal jurisdictions. Since the project requires in-depth research it may be closely related to the student's intended or current area of practice.

Apart from the personal satisfaction of gaining a Masters, the course provides career benefits through focus on skills that are directly relevant to the needs of modern legal practice, including:

- The development of existing expertise and knowledge
- The opportunity to gain experience in a new area
- Enhancement of skills in research, analysis and practical application or problem solving
- Enhanced understanding of the wider context in which the law is developed and is implemented

Entry requirements

Applicants must successfully have completed the Legal Practice Course (LPC) or Bar Professional Training Course (BPTC) or their equivalent. Alternatively applicants must have enrolled on Northumbria's LPC or BPTC at the same time as they enrol on the LLM in Advanced Legal Practice and be expected to complete their LPC or BPTC within that academic year. Part-time LPC or BPTC students must have enrolled on the LLM in Advanced Legal Practice at the start of their final year. Students must successfully complete their LPC or BPTC before they can be awarded the LLM.



"The staff were all very approachable and helpful and always made time for us when we needed advice or clarification."

Victoria Smith, GDL, LPC & LLM Advanced Legal Practice graduate, Solicitor at Deep Ocean

Commercial Law

International Commercial Law

International Trade Law

PG Cert/PG Dip/LLM

Mode of study Distance Learning

Duration 9 - 27 months

The Law School has developed three commercially orientated courses which have been designed to meet the needs of professionals working in a commercial context.

Postgraduate Certificate in Commercial Law

(60 credits)

Three compulsory modules make up the Postgraduate Certificate.

- Legal Research
- Commercial Contracts
- Company Law and Insolvency

Postgraduate Diploma in Commercial Law

(60 credits)

Three optional modules make up the Postgraduate Diploma.

- Carriage of Goods
- Construction Law
- Employment Law
- Intellectual Property Law
- International Finance Law
- International Dispute Resolution
- International Sale Contracts
- Law of International Trade*
- Transnational Competition Law
- World Trade Organisation

*This module cannot be taken after International Sale Contracts

Postgraduate Certificate in International Commercial Law

(60 credits)

Three compulsory modules make up the Postgraduate Certificate.

- Legal Research
- World Trade Organisation
- Law of International Trade

Postgraduate Diploma in International Commercial Law

(60 credits)

Three optional modules make up the Postgraduate Diploma.

- Commercial Contracts
- Company Law and Insolvency
- Construction Law
- Employment Law
- Intellectual Property Law
- International Finance Law
- International Dispute Resolution
- Transnational Competition Law

Postgraduate Certificate in International Trade Law

(60 credits)

Three compulsory modules make up the Postgraduate Certificate.

- Legal Research
- International Sale Contracts
- Carriage of Goods

Postgraduate Diploma in International Trade Law

(60 credits)

One compulsory and two optional modules make up the Postgraduate Diploma.

- International Dispute Resolution (Compulsory)
- Commercial Contracts
- Construction Law
- Employment Law
- Intellectual Property Law
- International Finance Law
- Transnational Competition Law
- World Trade Organisation

Please note, optional module choices will be grouped, meaning some module combinations will not be possible. Although every effort is made to ensure that these modules are offered, there may be occasions, for example due to staff sabbaticals, where a module may not be offered or module running order may change.

The project

Students wishing to gain an LLM must complete a research project of 15,000 – 17,000 words on a related area of law. Completion of the project enables you to explore a particular topic, of your own choosing, in much greater detail.

Employment Law in Practice

(in conjunction with DWF)

PG Cert/PG Dip/LLM

Mode of study Distance Learning

Duration 9 - 27 months

This innovative Masters course, developed in close consultation with DWF and human resources professionals, has been developed to meet the needs of those working in this highly complex yet fascinating area of law.

This course enables participants to explore and develop an in-depth critical understanding of the key areas of employment law in a practical context. The course will be of relevance to lawyers, human resources professionals, staff development and training officers and those with a general interest in employment law. It provides a unique opportunity for a wide range of professionals to gain a postgraduate qualification in employment law, enabling them to respond to complex legal and ethical problems, whilst still pursuing their careers. Modules run sequentially and are each studied over a three month period.

Postgraduate Certificate in Employment Law in Practice

(60 credits)

Three compulsory modules make up the Postgraduate Certificate.

- Legal Research
- The Employment Relationship
- Terminating the Employment Relationship



Postgraduate Diploma in Employment Law in Practice

(60 credits)

Two compulsory and one optional module make up the Postgraduate Diploma.

- Restructuring the Employment Relationship (Compulsory)
- Managing Equality and Diversity in an Employment Context (Compulsory)
- Employment Tribunals Practice and Procedure (Option) or
- Information Rights and Employment Law (Option)

Although every effort is made to ensure that these modules are offered, there may be occasions, for example due to staff sabbaticals, where a module may not be offered or module running order may change.

The project

Students wishing to gain an LLM must complete a research project of 15,000 – 17,000 words on a related area of law. Completion of the project enables you to explore a particular topic, of your own choosing, in much greater detail.

DWF

This course is being offered by Northumbria Law School in conjunction with the employment law department of DWF. The benefits to students of enrolling upon a course offered by an internationally recognised university in conjunction with a leading North East law firm is immeasurable. DWF solicitors, as advisors to a range of public and private sector organisations, are well aware of practical problems businesses face.

Information Rights Law and Practice

PG Cert/PG Dip/LLM

Mode of study Distance Learning

Duration 9 - 27 months

The Information Rights course was developed by Northumbria University in conjunction with the Ministry of Justice.

It commences in September of each year and is the first postgraduate qualification designed to unravel the complexities of information rights. The course recognises the increasing importance of effective records management and information handling. It aims to respond to the specific needs of information rights practitioners, providing a structured framework within which they can acquire and update knowledge whilst gaining a qualification that recognises their specialist expertise. This course will therefore be attractive both to practitioners specifically charged with processing information and to other professionals working in environments where information is held, including central and local government, health, education and commerce.

Realistic practical scenarios will be used throughout the course. As well as the core elements of the course, a wide range of specialist options are available. All of the optional modules have been developed in consultation with professionals, including records management specialists from Computing, Engineering and Information Sciences, to meet the specific needs of practitioners.

The course structure is set out to the right. Modules run sequentially and are each studied over a three month period.



Postgraduate Certificate in Information Rights Law and Practice

(60 credits)

Three compulsory modules make up the Postgraduate Certificate.

- Legal Research
- Foundations of Information Rights
- Data Protection

Postgraduate Diploma in Information Rights Law and Practice

(60 credits)

Two compulsory and one optional module make up the Postgraduate Diploma.

- Freedom of Information (Compulsory)
- Access to Environmental Information (Compulsory)

- Confidentiality and Medical Issues (Option) or
- Children and Young Persons – Sharing Information (Option) or
- Intellectual Property (Option) or
- Information Rights and Employment Law (Option)

Although every effort is made to ensure that these modules are offered, there may be occasions, for example due to staff sabbaticals, where a module may not be offered or module running order may change.

The project

Students wishing to gain an LLM must complete a research project of 15,000 – 17,000 words on a related area of law. Completion of the project enables you to explore a particular topic, of your own choosing, in much greater detail.

Master of Laws

PG Cert/PG Dip/LLM

Mode of study Distance Learning

Duration 9 - 27 months

This Masters course offers flexibility and choice to students and will appeal to a broad range of people whether employed in the legal sector or who have an interest in specific aspects of legal areas which are relevant to their employment or personal development. Students can tailor their Masters course to meet their own interests and aspirations.

Students can choose to study subjects from a whole range of modules offered across the School's other LLM courses. The course follows the Linked Award structure and begins with a module in Legal Research to allow students to develop the necessary skills to successfully complete the course assessments.

Optional Saturday study days are available which allow participants to deepen their understanding of critical issues in each module and to meet tutors and other students to share experiences.



- Employment Law
- Freedom of Information
- Intellectual Property Law
- International Dispute Resolution
- International Finance Law
- International Sales Contracts
- Managing Equality and Diversity in an Employment Context
- Medical Confidentiality
- Mental Health Tribunals
- Mentally Disordered Offenders
- Restructuring the Employment Relationship
- World Trade Organisation

Please note, optional module choices will be grouped and will run in designated blocks, meaning some module combinations will not be possible. Although every effort is made to ensure that these modules are offered, there may be occasions, for example due to staff sabbaticals, where a module may not be offered or module running order may change.

- Hospitals and Consent to Treatment
- International Sale Contracts
- Law of International Trade
- Terminating the Employment Relationship
- The Employment Relationship
- Treatment: Consent and Patients' Rights
- World Trade Organisation

Postgraduate Diploma in Law

(60 credits)

Three optional modules make up the Postgraduate Diploma. Choose from the following:

- Access to Environmental Information
- Commercial Contracts
- Company Law and Insolvency

Postgraduate Certificate in Law

(60 credits)

One compulsory and two optional modules make up the Postgraduate Certificate.

- Legal Research (Compulsory)

Two optional modules from a choice including:

- Carriage of Goods
- Clinical Negligence
- Commercial Contracts
- Company Law and Insolvency
- Compulsory Civil Admission to Hospital and Guardianship
- Data Protection
- Foundations of Information Rights

Medical Law

(in conjunction with Ward Hadaway Solicitors)

PG Cert/PG Dip/LLM

Mode of study Distance Learning

Duration 9 - 27 months

The LLM in Medical Law is a practice-based and innovative course examining those issues of direct concern to both healthcare professionals and lawyers.

The course combines a practical approach with an in-depth study of Medical Law. Lawyers will be able to acquire detailed knowledge of topics central to healthcare claims. Doctors, nurses and healthcare managers will be able to develop their legal knowledge and skills in areas closely associated with their work and in relation to questions of liability. Whether lawyer, medic or manager, the options allow participants to pursue individual interests and professional needs. In addition, the Legal Research module acts as a transition for non-lawyers, providing essential legal expertise.

Modules run sequentially and are each studied over a three month period.



Postgraduate Certificate in Medical Law

(60 credits)

Three compulsory modules make up the Postgraduate Certificate.

- Legal Research
- Clinical Negligence
- Treatment: Consent and Patients' Rights

Postgraduate Diploma in Medical Law

(60 credits)

One compulsory and two optional modules make up the Postgraduate Diploma.

- Medical Confidentiality (Compulsory)
- Employment Issues in Healthcare (Option) or
- Mental Health and Capacity (Option) or
- The Expert Witness (Option) or
- Advanced Clinical Negligence Litigation (Option) or
- Children and Medical and Mental Health Issues (Option)

Please note, optional module choices will be grouped, meaning some module combinations will not be possible. Although every effort is made to ensure that these modules are offered, there may be occasions, for example due to staff sabbaticals, where a module may not be offered or module running order may change.

The project

Students wishing to gain an LLM must complete a research project of 15,000 – 17,000 words on a related area of law. Completion of the project enables you to explore a particular topic, of your own choosing, in much greater detail.

Mental Health Law

PG Cert/PG Dip/LLM

Mode of study Distance Learning

Duration 9 - 27 months

This popular Masters course provides a unique opportunity for mental health practitioners to gain a postgraduate qualification in Mental Health Law whilst still pursuing their careers.

The course provides students with the opportunity to undertake in-depth study of Mental Health Law with the flexibility of distance learning study enabling participants to work independently whilst maintaining essential contact and support from their tutors. It will appeal to practising lawyers, psychiatrists, social workers, hospital managers and law graduates as well as those with a general interest in Mental Health Law.

The course structure is set out below. Modules run sequentially and are each studied over a three month period.

Postgraduate Certificate in Mental Health Law

(60 credits)

Three compulsory modules make up the Postgraduate Certificate.

- Legal Research
- Compulsory Civil Admission and Community Provisions
- Hospitals and Consent to Treatment

Postgraduate Diploma in Mental Health Law

(60 credits)

Two compulsory and one optional module make up the Postgraduate Diploma.

- Mental Health Tribunals (Compulsory)
- Mentally Disordered Offenders (Compulsory)
- Children and Young Persons (Option) or
- Mental Health Law and Older People (Option) or
- Human Rights Issues in Mental Health Law (Option)

Although every effort is made to ensure that these modules are offered, there may be occasions, for example due to staff sabbaticals, where a module may not be offered or module running order may change.

The project

Students wishing to gain an LLM must complete a research project of 15,000 – 17,000 words on a related area of law. Completion of the project enables you to explore a particular topic, of your own choosing, in much greater detail.



Professional Practice in Law (Mental Health Law)

Postgraduate Certificate

Mode of study Distance Learning

Duration 6 months to 2 years

This is a one-year work-based learning course. You will be supported throughout the course to develop your knowledge of mental health law and to develop key skills including skills of reflection, analysis, research and problem solving.

This course will be particularly relevant if you are a medical practitioner without a certificate of specialist registration, registered psychologist, mental health or learning disability nurse, occupational therapist or social worker and if you are also interested in becoming an Approved Clinician for the purposes of the Mental Health Act 1983.

In the first module 'Academic Recognition of CPD' you will, through completion of your own Learning Proposal, be asked to reflect upon

your pre-existing knowledge and experience relevant to the Approved Clinician role. You will be appointed an academic tutor who will be able to provide you with advice on your personal and professional development, from an academic perspective. They will not only teach you about the law and the role of the Approved Clinician but they will also help and encourage you to develop and use critical reflection skills as a tool to develop your personal and professional skills. Completion of

your learning proposal will help you to identify what you need to learn in order to progress your career.

Through completion of a work-based project you will further develop your ability to think independently, to reflect upon your own practice and that of others, to reflect upon the legal and ethical issues which arise when patients are detained, to undertake research, to apply knowledge to resolve complex problems, and to present and justify your work.



Business Law

Postgraduate Certificate

Mode of study Distance Learning

Duration 1 year

Understanding how the law operates within the commercial context is essential for any successful business whether it be a small enterprise providing local services or a multinational company trading throughout the world.

The impact of increased legislation in the fields of employment law and environmental law, the complex rules governing intellectual property rights and the rules governing international trade finance law are just some of the challenges facing businesses today.

In recognition of these demands the Law School has developed a Postgraduate Certificate in Business Law, designed specifically to meet the needs of members of the business community who are interested in developing their understanding of the law that affects their business activity.

In order to obtain a Postgraduate Certificate in Business Law students are required to satisfactorily complete three modules. Students can select the modules that meet their specific needs. All of the modules are taught

from a practical point of view enabling students to understand the law in context and to apply it to real-life situations.

Students are required to complete three modules from the following:

- Carriage of Goods
- Commercial Contracts
- Company Law and Insolvency
- Intellectual Property Law
- International Dispute Resolution
- International Sale Contracts
- Law of International Trade
- Transnational Competition Law
- World Trade Organisation

Students who have never studied law

before will be required to successfully complete the Legal Research module.

Please note, optional module choices will be grouped, meaning some module combinations will not be possible. Although every effort is made to ensure that these modules are offered, there may be occasions, for example due to staff sabbaticals, where a module may not be offered or module running order may change.

Opportunity for further study

Students who have satisfactorily completed the Postgraduate Certificate may wish to further their study by enrolling onto one of the three 'commercial' LLM courses offered by Northumbria Law School.



Data Protection Law and Information Governance

Postgraduate Certificate

Mode of study Distance Learning

Duration 1 year

The course recognises the relationship between data protection legislation and information governance and security and is designed to develop students' skills and abilities in both areas.

The course has been specifically designed with the new EU Data Protection Regulation in mind. It will be of direct relevance to professionals working as data protection officers, information managers and information governance managers and those charged with records management, data security, data handling and issues of data sharing. The course will provide a University validated award in this emerging profession and a stepping stone for further academic and professional development in this area. Organisations will also benefit from this course because it will provide an opportunity for learners to embed their knowledge into their professional practice via appropriately tailored assessments.

Students will study three modules: Legal Research; Information Governance and Security; and Data Protection. Students will be provided with support to enable them to locate and use legal sources. They will develop their understanding of the laws relating to data protection in the UK and Europe, and enhance their ability to undertake critical evaluation of data protection law and its application in practice. Students will also analyse the key concepts, theories, standards and frameworks of information governance and security, including risk management with a view to evaluating their own organisation's approach to



information governance and security. This approach distinguishes the course from the existing CPD type learning, providing added value to employees and employers.

As well as its immediate relevance to professionals and organisations dealing with sensitive or financial information, such as the NHS, Department of Work and Pensions, the police, local authorities and banks, the course will also be of interest to other professionals in both the public and private sectors who face the increasing challenges of effectively managing the quantity and quality of personal data to maximise efficiencies and business opportunities whilst ensuring compliance with data protection legislation. The course will provide the tools for meeting new data protection challenges imposed

under EU legislation changes. In addition, it will look at ways of leveraging information opportunities.

This course is offered both by the School of Law and by the iSchool, in the Faculty of Engineering and Environment. The iSchool is widely recognised for its innovative distance and work-based learning programmes in information and records management and for its related research. The School of Law is similarly actively involved in research and consultancy in the field of data protection and information sharing and also offers other information rights programmes. Satisfactory completion of the course will enable students to progress to the Diploma stage of the LLM in Information Rights Law and Practice course which is also offered by the School of Law.

Graduate Diploma in Law (GDL)

Mode of study Full-time/Distance Learning

Duration 1 year/2 years

Also known as the Common Professional Exam (CPE), the Graduate Diploma in Law (GDL) provides the academic stage for non-law graduates who intend to practise law. Completion of the GDL allows entry onto the Legal Practice Course (LPC) to train as a solicitor or the Bar Professional Training Course (BPTC) to train as a barrister. Both the LPC and BPTC courses are offered at Northumbria.

Students who pass the GDL first time are guaranteed a place on Northumbria's LPC. Although the Bar Standards Board does not permit institutions to guarantee places on the BPTC, favourable consideration is given to internal candidates.

The full-time course

The full-time course is a one year academic course. It begins with a pre-attendance study package completed by students prior to enrolment in September, when full-time attendance begins. The course runs until June of the following year – a total of 36 weeks. Students are required to attend the University five days per week and receive weekly tuition of between 10 and 18 hours of lectures and seminars. In addition, students must prepare for seminars and coursework and should anticipate a workload of 45 hours per week. Students are provided with comprehensive study materials.



The distance learning course

This mode is designed for those unable to attend on a full-time basis and is ideally suited to those in employment or with family commitments. Students are required to attend 12 study days per academic year for two years. The study days (9am – 5pm) are grouped in six pairs, normally a Wednesday and Thursday, which fall approximately every six weeks during September, October, December, February, March and May. Timetables are issued in advance of each set of study days. It is recommended that students allow 15–20 hours per week for independent study. Each subject has a detailed study guide, workbook and specially designed electronic webcasts linked to relevant core and supporting materials. A weekly study schedule sets out what work

is required in advance of the study days. Distance learning students may contact teaching staff during the normal working week for guidance and advice.

Course content

On both routes, students are required to study the following subject at the beginning of the course by means of a pre-attendance study package and induction course:

- English Legal System

In addition, students must study the following seven subjects, which are stipulated by the professional bodies as being the foundations for legal knowledge.

- Contract Law
- Criminal Law

- Equity and Trusts
- European Union Law
- Property Law
- Public Law
- Law of Tort

These subjects are taught through the course by means of lectures, large group sessions and seminars. The syllabus for each of the foundation subjects is the same regardless of the study mode. Students on the distance learning course study Criminal, Contract, EU and Property Law in the first year and Equity and Trusts, Public Law and Tort in the second year.

Assessment

Assessment is by a combination of coursework and unseen examination or unseen examination only.

Further area of law

All students are required to undertake research into a further area of law culminating in a written submission and oral presentation. The area is chosen by students from a range of options including Company, Commercial, Employment, Evidence, Family Law and Medical Law among

others. Students receive initial guidance on the subject and advice on how to conduct legal research.

Conversion to a law degree

Students who successfully complete the GDL course are eligible to convert their Diploma into an LLB (Hons) degree. This requires the submission of a project of 10,000-15,000 words or the study of two additional legal subjects chosen from the following list:

- Company Law
- Medical Law
- Evidence
- Employment Law

Entry requirements

Applicants must have an undergraduate degree in any subject from a UK or Republic of Ireland Higher Education Institution. Students wishing to go on to study on the Bar Professional Training Course (BPTC) must have a minimum of a lower second (2:2) class degree. Applicants with a first degree from somewhere else must obtain a Certificate of Academic Standing from the Bar Standards Board if they wish to

proceed to study on the BPTC after completing the GDL. Alternatively applicants must obtain a Certificate of Academic Standing from the University if they hold a non UK or Republic of Ireland first degree and wish to proceed to study on the Legal Practice Course (LPC) once they have completed the GDL.

Applicants who have previously studied any of the foundation subjects may obtain an exemption from those subjects. Application for exemption must be made to the Bar Standards Board by students wishing to proceed on to the BPTC and to the University by students wishing to proceed on to the LPC. Please note that students with exemptions who pass the outstanding subjects will pass the course but will not generally be awarded the Diploma.

How to apply

Applications for a place on the full-time Graduate Diploma in Law can only be made online through the Central Applications Board lawcabs.ac.uk

Applications for places on the distance learning GDL should be made online via our website northumbria.ac.uk.



"Studying via distance learning was a new challenge but the academics understand the reality of balancing work, life and studying."

Jen Smith, GDL student

Legal Practice Course (LPC)

Mode of study Full-time/Part-time

Duration 1 year/2 years

The Legal Practice Course (LPC) is the required training for all students who wish to qualify as solicitors. The course provides vocational training across a range of subjects and practical skills, enabling students to learn how to apply their legal knowledge in a practical context.

Flexible learning options

We understand the pressures faced by students both to fund their studies and to gain legal work experience. We therefore offer both a full-time and a part-time LPC.

Full-time route

The LPC is divided into two stages. Stage 1 runs from September to mid-December. Stage 2 runs from January to May. Students on the full-time course are timetabled for taught sessions two days a week. Teaching will take place on Tuesdays and Wednesdays between 9am and 6pm, for Stage 1. Depending upon the electives you choose, a two-day Stage 2 may also be possible. However the course is a full-time course, requiring substantial preparation time outside taught sessions. Some activities, such as careers sessions or mock examinations, will take place outside the two days on which students normally have classes.

Part-time route

The LPC is also offered on a part-time basis, running over two years with attendance one day per week – Wednesday in Year 1 and Tuesday in Year 2. The part-time route provides the added benefit of enabling students to undertake a training contract whilst completing the LPC.

Extensive revision periods

Both the Christmas vacation and Easter vacation periods, each of three weeks, are set aside for revision/work experience.

Teaching staff

You will benefit from our vastly experienced, fully qualified teaching staff. We have specialist teaching on our LPC, with staff from a range of practice backgrounds including magic circle, top regional commercial practices in the North, general practice firms and publically funded practices.

There are over 100 academic staff in the School, many of whom have been, or are still, in practice. As such, we are able to offer a uniquely wide range of electives in Stage 2, with an excellent balance between the general and commercial areas of legal practice so that students are able to study aspects of the law which are appropriate to their chosen legal career.

We also continue to develop new electives that focus on growth areas in legal practice, for example Corporate Debt and Restructuring, as well as offering the innovative Student Law Office elective, which allows students

the opportunity to undertake live client work through the multi award-winning Student Law Office.

Staff/student ratio

We pride ourselves on our excellent staff/student ratio which allows us to give students exceptional levels of support and we put a premium on face-to-face teaching. Teaching and learning on the course takes place through live lectures to large groups (which are also made available as recordings) and workshops.

Guaranteed Legal Placement or Professional Mentor Scheme

Every student who accepts a place on our LPC will have the opportunity to gain some essential legal work experience by either being offered a work placement with a firm or organisation with whom we have close professional links or a Professional Mentor who has been handpicked by us to offer assistance and guidance on your journey to becoming a solicitor.

Dean's Award

In 2016 there is an opportunity to apply for a Dean's Award to reduce the cost of your fees. Allocation of the Award is determined by the content and presentation of the application form, academic and professional merit, relevant legal and other experience, interests and achievements. Please see the website for details of any awards available in 2017.

Mediation

Most clients never get their "day in court". Learn the skills involved in mediation, as a viable alternative to litigation. Mediation is an alternative method of dispute resolution, rapidly gaining popularity in the UK. It is cheaper and faster than going to court, and allows for greater client autonomy than having the case decided by a judge.

This is an optional module taught by qualified mediators. It is designed to provide an overview of the mediation process, considering the roles of the mediator, the parties and their legal representatives. It encompasses role play and reflection. It runs during Stage 1 of the course, and provides a chance to develop skills that firms increasingly value and will enhance your CV.

Law as a Business

Could you answer an interview question such as the following?

"What difference do you think ABSs will make over the next five years in the legal marketplace?"

It has never been more important for lawyers hoping to enter and be successful in private practice to have a knowledge of legal business issues and how a legal firm should operate. Law firms look not just at academic achievement in making employment decisions but also at whether someone shows some evidence of the practical knowledge and understanding which will help their business.

This optional module is designed to cover the issues relevant to law firms as businesses and runs during Stage 2 of the course. Topics such as Marketing, Management in the Legal Environment and Career Progression within a Law Firm are covered, as well as the varied structures available to legal businesses. Attendance is

optional but should prove a fantastic addition to any CV and a real talking point in interview.

Course content

Students on the LPC study three core practice areas in Stage 1 (Stage 1 can be studied as a general practice route or as a commercial practice route):

- Business Law and Practice
- Property Law and Practice
- Civil and Criminal Litigation

For Stage 2, students are asked to choose three electives. Past electives have included:

General Practice

- Advanced Advocacy
- Employment Law
- Child Care Law
- Family Law
- Law and the Elderly Client
- Mental Health Law
- Planning and Environmental Law

• Student Law Office – students work in Northumbria's Student Law Office, which is the largest student law clinic in the country, working on real legal problems for members of the public.*

Commercial Practice

- Corporate Debt and Restructuring
- Commercial Law
- Commercial Leases
- Corporate Finance
- Intellectual Property
- Sales, Acquisitions and Equity Finance

*Subject to maximum numbers

Guidance as to appropriate choice of electives is given by subject tutors during the early part of Stage 1.

Entry requirements

Applicants must either have obtained a Qualifying Law Degree, passed the Graduate Diploma in Law or otherwise have satisfied the SRA requirements to embark on the vocational stage of training.

How to apply

Applications for a place on the full-time Legal Practice Course can only be made online through the Central Applications Board lawcabs.ac.uk

Applications for places on the part-time LPC should be made online via our website northumbria.ac.uk.

All students are required to register with the Solicitors Regulation Authority before enrolling on the LPC.



"The LPC at Northumbria certainly prepared me for what it would be like working in a law firm."

Laura McIluff, GDL & LPC graduate, Solicitor at Irwin Mitchell

Bar Professional Training Course (BPTC)

Mode of study Full-time/Part-time day release

Duration 1 year/2 years

Students who wish to qualify as barristers are required to complete the Bar Professional Training Course (BPTC). This comprehensive course provides vocational training across a range of subjects and skills necessary to enter pupillage.

Course content

The Bar Professional Training Course is offered through both full and part-time study. All core subjects and skills are taught by barristers, many of whom practice on the North Eastern circuit. During the course students develop a range of essential skills, which include:

- Advocacy
- Drafting
- Opinion Writing
- Conference Skills
- Resolution of Disputes Out of Court

Evidence, criminal litigation and civil litigation are also taught as discrete subjects, as well as being integrated with the main skill areas.

All Advocacy tutors are accredited by the Advocacy Training Council to train students.

Many are also accredited to deliver advanced advocacy training to junior practitioners and to train others to teach advocacy. All subjects and skills are developed through practical sessions, in which students work on case studies and carry out a range of tasks typical of work in pupillage. All students choose two specialist options. Current options include:

- Civil Practice
- Clinical Negligence and Personal Injury
- Chancery Practice
- Commercial Practice
- Criminal Practice
- Employment Practice
- Family Practice
- Landlord and Tenant
- Student Law Office – students will work in Northumbria's Student Law Office, which is the largest student

law clinic in the country, working on real legal problems for members of the public.*

*Subject to maximum numbers

The BPTC is student-centred with skills taught in small groups. Students are provided with individual feedback on each skill from BPTC tutors and Northumbria promotes the use of critical self-reflection, which can dramatically improve student performance. BPTC students will undertake their legal education in a modern building using state-of-the-art teaching and learning technologies.



The BPTC part-time

The BPTC part-time course follows a flexible day release pattern with students choosing which day of the week they wish to attend. Part-time students benefit from electronic lectures and all of the latest e-Learning developments.

Entry requirements

Applicants must either have obtained a Qualifying Law Degree, passed the Graduate Diploma in Law or otherwise have satisfied the Bar Standards Board requirements to embark on the vocational stage of training. All students are required to join one of the four Inns of Court before they commence the BPTC.

Bar Course Aptitude Test

Applicants must pass the Bar Course Aptitude Test (BCAT) introduced by the Bar Standards Board (BSB) in 2012. The test is compulsory and requires prospective students to achieve a minimum standard as specified by the BSB.

BPTC Dean's Awards

In 2016 these awards are open to all students applying for the full-time, part-time or LLM in Bar Practice. Students must have selected Northumbria as either their first, second or third choice and have applied via the central online application system by the January deadline. The BPTC is designed to prepare students for pupillage in England and Wales. Therefore, a simulated pupillage application is used as a selection method, closely followed by an interview for those shortlisted applicants. Please see the website for details of any awards available in 2017.

How to apply

All applications for the Bar Professional Training Course, whether full-time, part-time or LLM in Bar Practice, are made through a central online application system barsas.com

Students are advised to submit their application as early as possible due to strong competition for places on the BPTC. The central online application system goes live in early November of the year prior to entry with the first round of applications closing in early January.



"Many of the tutors at Northumbria are practising barristers, so that's a big advantage because they're practising doing the things that you are learning about."

**Alistair Mills, BPTC graduate,
Tenant at Landmark Chambers,
London**



Advice and information



If you require additional information about any of our courses please visit northumbrialawschool.co.uk.

If you need advice on entry requirements or the application process, please contact our Admissions Office and a member of our dedicated team will be happy to help. Please see page 51 for contact details.

Money matters

For further information on finance and funding, please visit northumbria.ac.uk/feesandscholarships.

Visit the Money Matters section on our website northumbria.ac.uk/moneymatters.

You can also speak to one of the University's Funding Advisers – visit northumbria.ac.uk/financialsupport for information.

This information was correct at the time of publication (June 2016) but is subject to change.

For example, to ensure that all of our courses remain current and relevant, our leading academics continuously review and improve course content in consultation with students and employers. So to ensure that you are kept up to date with any enhancements, make sure you visit northumbria.ac.uk/yourlearning and sign up for regular updates.

Useful contacts

Northumbria Law School

T: +44 (0)191 227 4494
E: law@northumbria.ac.uk
northumbrialawschool.co.uk

Admissions

T: +44 (0)191 227 4453
E: et.admissions@northumbria.ac.uk

International Admissions

T: +44 (0)191 243 7906
E: er.internationaladmissions@northumbria.ac.uk

Solicitors Regulation Authority

The Cube,
199 Wharfside Street,
Birmingham
B1 1RN
T: 0870 606 2555
sra.org.uk

BAR SAS

(BPTC Applications)
barsas.com

The Bar Standards Board

289–293 High Holborn
London
WC1V 7HZ
T: 0207 611 1444
barstandardsboard.org.uk

The Central Applications Board

(GDL and LPC Applications)
PO Box 84
Guildford
Surrey GU3 1YX
T: 01483 451080 (GDL)
T: 01483 301282 (LPC)
lawcabs.ac.uk

Inner Temple

Treasury Office
Inner Temple
London
EC4Y 7HL

T: 0207 797 8250
innertemple.org.uk

Gray's Inn

Treasury Office
8 South Square
Gray's Inn
London WC1R 5ET

T: 0207 458 7800
graysinn.org.uk

Middle Temple

Treasury Office, Ashley Buildings
Middle Temple Lane
London
EC4Y 9BT
T: 0207 427 4800
middletemple.org.uk

Lincoln's Inn

Treasury Office
Lincoln's Inn
London
WC2A 3TL
T: 0207 405 1393
lincolnsinn.org.uk

Overseas Offices

Thailand

Also responsible for Indonesia, Cambodia, Myanmar, Pakistan and Vietnam.
283/46 Home Place Bldg
Unit 1001-1, 10th FL. Sukhumvit
55 (Thonglor 13) Bangkok 10110, Thailand
T: (+66) 2712 7338
E: thaioffice@northumbria.ac.uk

India

Also responsible for Bangladesh and Nepal.
Spaze iTech Park
832, 8th Floor, Tower B3
Sector 49, Sohna Road
Gurgaon 122002
Haryana
India
T: (+91) 124 421 6246
E: indiaoffice@northumbria.ac.uk

P. R. China

Room 1503, Block B, Winterless Centre
Jia 1, Xi Da Wang Road
Chaoyang District
Beijing 100026
P. R. China
T: (+86) 10 6538 8135
E: chinaoffice@northumbria.ac.uk

Malaysia

Also responsible for Brunei, Hong Kong, the Philippines, Singapore, Taiwan and South Korea.
A-8-3, 8th Floor,
Northpoint Midvalley City
1 Medan Syed Putra Utara,
59200 Kuala Lumpur
Malaysia
T: (+60) 3 2287 8080
E: malaysiaoffice@northumbria.ac.uk


For further information contact

T: 0191 227 4453

E: law@northumbria.ac.uk

northumbria.ac.uk/law

Find us on Facebook, Twitter and LinkedIn:

 [@northumbrialaw](https://twitter.com/northumbrialaw)

 facebook.com/northumbrialaw

 Search Northumbria Law School

375802/06/16