

Welcome

at Northumbria

Northumbria University is one of the largest and most successful universities in the UK. We place research at the very core of our academic community.

Research is what is so very special about a University, and at Northumbria we pride ourselves particularly on research that makes a difference; research that has application and affects people's lives, as well as on driving forward new knowledge and understanding across all our disciplines. Research excellence is at the heart of Vision 2025, the ambitious and imaginative programme that sets out the University's intended development over the coming years.



Research

Northumbria is a research-rich, business-focused, professional university with a global reputation for academic quality. We conduct ground-breaking research that is responsive to the science & technology, health & well being, economic & social and arts & cultural needs of the communities.



HR EXCELLENCE IN RESEARCH

Northumbria University was awarded the European Commission [HR Excellence in Research Award](#) in January 2013 rewarding the University's commitment to supporting both research careers and excellent working conditions for researchers.

A university with research power

At Northumbria University we have an impressive track record of collaborating with like-minded international research, education and business partners. We conduct ground-breaking research and have an international reputation for creating successful, multidisciplinary research projects that make an impact nationally and internationally.

If you want to be part of a university that is internationally recognised for creating successful, multidisciplinary partnerships that deliver impactful world-class research, Northumbria University is the right choice for you.

Our track record and recent [REF](#) results mean that we are in a stronger position than ever to lead the debate and respond to today's challenges. If you want to work with us to shape tomorrow's solutions, here are some of the fundamental questions that we will be addressing in our research:

It is endlessly fascinating to be with people who are creating new knowledge, thinking new thoughts and developing new theories

Professor George Marston

Humanities
What does it mean to be a human?

Future Engineering
How can engineering enable more people to live with fewer resources?

Critically Aware Design Innovation
What are the most effective ways to have an impact on today's health & What tools and techniques do we have to enable & co-create the best of all possible futures?

The Centre for Environmental and Global Justice
What are the environmental harms & crimes that are threatening people & the planet, & how do we achieve justice?

Bioeconomy
Can bio-based products & processes save the planet while driving our economy?

Digital Living
How will digital technologies change our lives in the city?

Extreme Environments
How do we investigate extreme environments on Earth & in space?

Integrated Health
How can we design interventions to optimise the health and wellbeing of individuals & groups throughout the course of their life?

Postgraduate Research Degrees

Northumbria University is one of the largest and most successful universities in the UK. At Northumbria we pride ourselves particularly on research that makes a difference; research that has application and affects people's lives, as well as on driving forward new knowledge and understanding across all our disciplines. Northumbria is in the UK top 50 for research power and has been recognised by Times Higher Education as having the biggest rise in research power of any university in a national assessment of [research quality in UK universities](#).

Postgraduate students are a vitally important part of our research landscape. With over 500 students studying for research degrees (MPhil, PhD and Professional Doctorate) across the University, we have a vibrant community of postgraduate researchers, supported by excellent facilities in the Graduate School, which oversees all aspects of postgraduate research programmes and provides resources to support them.

Opportunities for postgraduate research are available in all parts of the University, with supervision provided by acknowledged experts.

As a research-rich, business focussed, professional university with a global reputation for academic excellence, we are able to offer a range of PhD/MPhil programmes, [Research projects, and Studentships](#) throughout the year, across all academic departments.

Applications can be made for PhD study, normally to commence in October or February each year. The Faculty of Engineering and Environment also has a June intake. We only accept DBA/DBL applications for the October intake. The deadlines for each intake are:

Intake	Application deadline
1 st October	1 st July
1 st March	1 st December
1 st June	1 st March



Please use the **PGR application form** to apply; once you have fully completed the form, please submit it to pgr.admissions@northumbria.ac.uk. Please note that applications will only be accepted when submitted with the following information:

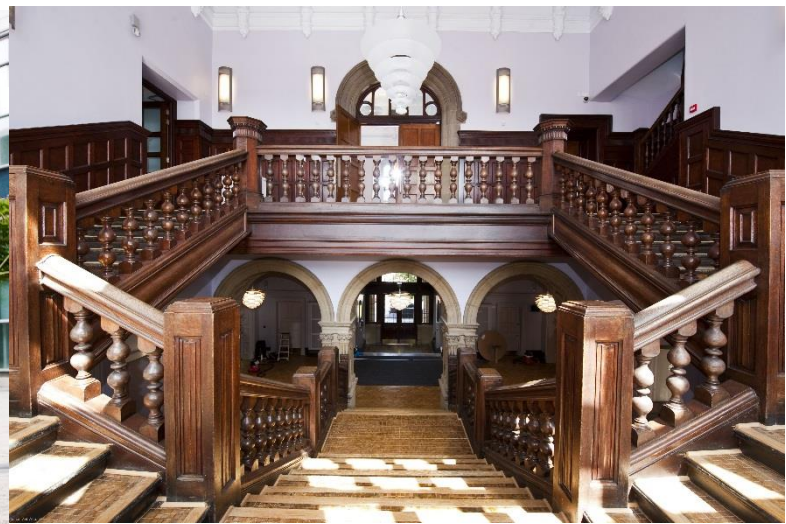
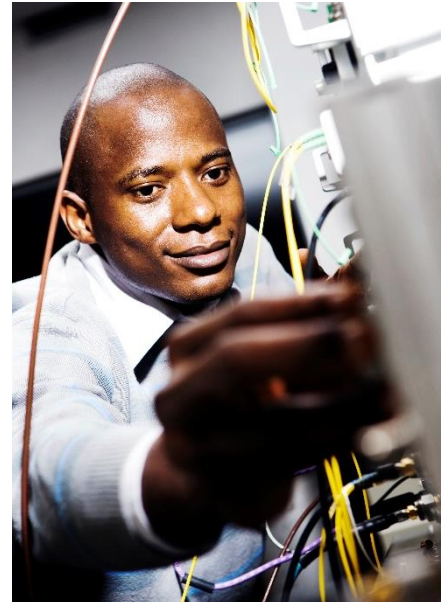
- A fully completed application form (all sections must be completed)
- Evidence of academic qualifications (certificates and transcripts)
- Evidence of accepted English language proficiency for applicants whose first language is not English
- A research proposal, outlining your area of research; please note that even if you are applying for a specific research vacancy with a pre-defined research proposal, you are still required to write a proposal. For guidance on writing your research proposal, please see [here](#).

Entry Requirements

Usually applicants are expected to have at least an upper second class Honours degree (UK) or equivalent from an overseas university, or lower second class Honours degree (UK) or equivalent from an overseas university plus a Masters degree in a relevant discipline. Applicants who do not hold these qualifications must demonstrate equivalent intellectual competence possibly referenced by appropriate experience to the satisfaction of the relevant University committee.

For DBA/DBL applications and Business and Law PhD applications, in addition to the above, you must have a minimum dissertation score of 58%, with your dissertation or dissertation plus research components equating to at least 60 credits. Please contact pgr.admissions@northumbria.ac.uk if you are unsure about this.

Applicants to Professional Doctorates programmes should note that in some cases, 150 credits of advanced standing may be awarded against their existing Masters qualification, where the applicant has appropriate experience of practice in line with the University Professional Doctorate Framework and/or evidence of appropriate continuous professional development.



English Language Requirements

For applicants whose first language is not English, you will need to meet our minimum overall and component scores for research programmes. For applications to all Faculties this is the equivalent of an IELTS overall score of 6.5 with no component below 6.0- for Newcastle Business School you will also need to achieve a score of 6.5 in the writing component of IELTS.

If you do not have the correct level of English language proficiency, Northumbria also offer pre-sessional English programmes throughout the year. For further details regarding our minimum English language requirements and English programmes visit our [English Language Centre](#) pages or email pgr.admissions@northumbria.ac.uk

What Happens Next

Provided applicants satisfy our entry requirements and the research proposal aligns with Northumbria's [research areas](#), applicants will be required to undertake an interview. This may be conducted on a face-to-face basis, by telephone, by video conferencing, or via Skype. A successful interview will normally result in referees being contacted and if satisfactory references are obtained, and (if applicable) the university is able to sponsor you as a Tier 4 student, an offer is usually made in writing. Please note that the Faculty of Engineering and Environment will not review applications until two suitable references have been received.

Research Staff

Our students learn from the best – inspirational academic staff with a genuine passion for their subject, whose teaching is shaped by world-leading and internationally excellent research.



The Graduate School

The Graduate School is at the heart of the University's support network for research students and works closely with academic staff in research centres, the University Library, Student Support and Wellbeing, and the Students' Union, in order to provide support to students throughout their studies. This includes provision of a comprehensive researcher development programme throughout the year, administration of funding schemes to support research activities, and the arrangement of research degree examinations and awards.

For more information about Northumbria's PGR programmes, please contact us at international@northumbria.ac.uk