

# Empowering your Employability with Northumbria Law School



# Developing your employability

Developing your employability alongside your studies is key to securing your desired job. This brochure highlights the extensive range of initiatives you can take advantage of to maximise your employability and increase your chances of achieving your ideal role.

What is graduate employability? It is “a set of achievements, understandings and personal attributes that make individuals more likely to gain employment and be successful in their chosen occupations.”

**Knight, P., & Yorke, M. (2004). Learning, curriculum and employability in higher education. London: Routledge.**

At Northumbria Law School we strive to prepare you for a rewarding career. We are ranked third for graduate employability in The Times University Guide 2013 and our law graduates have an excellent track record of securing legal and professional jobs.

Please read on to discover our exciting range of initiatives, schemes and opportunities which can develop relevant skills and experience providing you with a distinct advantage in the highly competitive employment market.

## Student Engagement Centre

We have a dedicated Student Engagement Centre (SEC) with experienced placement co-ordinators who support you in gaining valuable work experience through placements, volunteering and internships. The SEC is also a vital portal connecting you with business and the community, helping you develop your networking contacts.

**How this enhances your employability:**  
Use the SEC to be the first to find out about all the latest opportunities.

**How can you find out more?**  
Visit the SEC on the ground floor of CCE1.



## Volunteering opportunities

### Newcastle Citizens Advice Bureau (CAB)

In partnership with Newcastle CAB, we have developed a bespoke scheme which allows you to train as a Gateway Assessor. This role involves interviewing clients providing initial information/help or making referrals on their behalf.

### How this enhances your employability:

You will gain valuable experience in interviewing and advising clients, handling confidential information and following office procedures - all key skills which will be useful in your chosen career. As well as valuable legal experience, you will also gain recognition as a Gateway Assessor.

### Where can you find out more?

Contact our Community Liaison Officer, Claire Cowell  
claire.cowell@northumbria.ac.uk.

### Street Law and Street Law in Schools

Street Law is a community legal education programme which began in America over 40 years ago.

The aim of the scheme is to help members of the public understand aspects of the law which affect their day to day lives. The project involves you preparing and delivering presentations/ workshops on legal rights and responsibilities to community groups. In a similar vein, Street Law in Schools involves students designing and delivering a session to pupils on topical issues.

### How this enhances your employability:

These schemes improve research, organisation and presentation skills as well as providing evidence of a commitment to pro bono work, which is useful for careers within the voluntary and legal sector.

### How can you find out more?

Contact our Street Law co-ordinator Sarah Morse  
sarah.morse@northumbria.ac.uk

“73% of employers would recruit a graduate with volunteering experience over one without.”

**Timesbank. Reed Executive**

# International Opportunities

## ERASMUS and Study Abroad

The Erasmus and Study Abroad schemes provide an opportunity for students to study at a university in a different country for either one semester, or for a full academic year. Using our well established worldwide network of partner institutions, you can take advantage of an enviably wide choice of opportunities to spend part of your time studying abroad.

### How this enhances your employability:

Choosing to live abroad demonstrates the attitudes employers are looking for and develops skills impossible to teach in the classroom. You will develop personally while broadening your horizons and showing employers that you are an independent person. Students and graduates with international experience are immediately differentiated in the initial recruitment process.



“Students who study abroad tend to achieve more 2:1s and Firsts than those who do not.”

UK Higher Education International Unit

### How can you find out more?

Search for 'Study abroad, Exchange and Erasmus' on the Northumbria website or contact Lucinda Hudson [lucinda.hudson@northumbria.ac.uk](mailto:lucinda.hudson@northumbria.ac.uk).

# Travel Awards

The Law School has a generous Travel Awards initiative which is designed to encourage personal development by helping to fund voluntary work abroad and national work placements. These opportunities provide the chance to develop a range of personal and professional skills. Under the scheme students have travelled as far afield as Cambodia, South America and the United States on projects including building schools, teaching in orphanages and working with underprivileged children.

### How this enhances your employability:

Such experiences develop a wide range of attributes including teamwork, leadership and decision making skills.

### How can you find out more?

Contact James Gray [james.gray@northumbria.ac.uk](mailto:james.gray@northumbria.ac.uk).

# Mentoring

We offer opportunities to act as a mentor to other students or be mentored by a legal professional. We can train you as a “Law Learning Leadership” mentor, which enables you to support other students, enhance their learning and build their skills as well as your own. We also offer the opportunity for you to be mentored, interacting with a professional mentor to develop skills for the workplace and enhance your commercial awareness.

### How this enhances your employability:

Mentoring increases a range of skills (including communication and teamwork) and develops your confidence.

### How can you find out more?

Look out for emails advertising these opportunities.

# Passport to Employability Award (P2E)

This award provides the opportunity to improve your employability skills during your time at university and stand out to future employers. P2E recognises the activities which students undertake outside of their programmes which can enhance their employability skills. In today's competitive employment market, you will not only need to demonstrate to employers that you have developed knowledge, skills and competences through your academic studies, but also that you have participated in other activities, such as volunteering, work experience or other interests from which you have gained employability skills.

You will be required to understand the graduate job market, know what employers are looking for and how your career can develop to increasingly gain those skills.

The 2011 CBI/EDI Education & Skills Survey showed that employability skills are the single most important consideration for 82% of businesses when recruiting graduates.

### How this enhances your employability:

The P2E Award evidences your employability skills and provides formal recognition for your extra-curricular activities.

### How can you find out more?

Contact Jill Alexander [jill.alexander@northumbria.ac.uk](mailto:jill.alexander@northumbria.ac.uk).

# Mooting

Mooting is a mock courtroom advocacy exercise involving teams of two students representing opposing sides of a fictitious legal case (the 'moot'). You will analyse a legal problem, research the issues and present the arguments before a judge who will decide which team has won the moot. As well as competing in the Law School, there is often the opportunity to compete against other law schools nationally and internationally.

### How this enhances your employability:

Mooting enhances your public speaking skills, your ability to construct and defend an argument in addition to teamwork skills.

### How can you find out more?

Contact Ross Fletcher [ross.fletcher@northumbria.ac.uk](mailto:ross.fletcher@northumbria.ac.uk).

# Judicial Shadowing Scheme

This scheme allows you to shadow a member of the judiciary, providing an insight into a typical day of a judge. It allows you to network with members of the judiciary and observe a range of legal hearings.

## How this enhances your employability:

You will develop a deeper appreciation of the legal process and make contacts within the profession.

# Placement Opportunities

Students who wish to obtain commercial awareness and practical experience will benefit from undertaking a work placement. Through our links we have placements available at many well known national and international businesses, including a small number of law firms.

## How this enhances your employability:

You develop skills and experience in the workplace to complement the knowledge acquired from your programme.

## How can you find out more?

Visit the Student Engagement Centre.

“Over 50% of recruiters say that graduates who have no work experience at all are unlikely to be successful during the selection process.”

High fliers Research, The Graduate Market in 2014

## Lorena Dervishi: My Placement Year

I am Lorena Dervishi, a 20-year-old Law with Business student at Northumbria University, from Gateshead.

After I completed Second Year at University in the summer of 2014, I secured an eight-week Internship with Eversheds LLP. Towards the end of my time as an Intern with Eversheds, a place became available in the Shipping department and I was asked if I would be interested in staying with the firm as a Paralegal for a year. It was as a result of this offer that I decided to take a gap year from University in order to take advantage of this fantastic opportunity. Eversheds LLP is an international law firm, with 55 offices in over 29 countries worldwide.

Eversheds advises some of the largest companies in the world on major transactions. Over the years the firm has developed and adapted to meet the needs of its clients, whose businesses are increasingly globalised. The four main practice areas within Eversheds are Company Commercial, Human Resources, Real Estate, and Litigation and Dispute Management. Due to the fact that we have such a broad sector of services, different offices have different specialist teams. For example, in Newcastle there five different teams: Shipping, Commercial Dispute Resolution, Health and Safety, Human Resources and Construction.

# Bursaries, scholarships and prizes

With the support of a range of partner organisations we have numerous bursaries, scholarships and prizes available to recognise your achievements whilst enhancing your employability.

## Ben Hoare Bell Contribution Roll

This scheme, sponsored by law firm Ben Hoare Bell, acknowledges outstanding student contributions to life of the Law School and community.

## Bond Dickinson Honour Roll

This initiative, generously sponsored by Bond Dickinson, recognises academic achievement.

## Irwin Mitchell Scholarship

This scholarship, sponsored by leading national law

firm Irwin Mitchell funds a month long placement in an overseas law clinic in places such as Australia and New York.

## Ward Hadaway Bursary

Following a selection process two students are awarded a bursary consisting of a £1,000 award in Year 2 and Year 3 and up to 8 weeks' paid work experience with this leading commercial law firm..

## Woon Scholarships

Mr Wee Teng Woon, a Law School alumnus and long time supporter of our law students sponsors £1,000 scholarships to fund student participation in public interest law placements around the world, including Singapore.

## Budding Lawyer lives the American Dream thanks to Irwin Mitchell scholarship

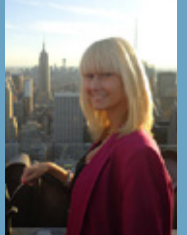
Laura Kirkpatrick, a law graduate at Northumbria University, was selected from dozens of her peers to take part in the work placement in the law clinic at City University New York Law School (CUNY), the premier human rights law school in the Big Apple.

The 22-year-old was selected for the four week placement after achieving top grades at university and impressing Irwin Mitchell staff during her interview. The scholarship has been sponsored by Irwin Mitchell to help nurture budding young legal professionals from Northumbria University. Laura, from Hartlepool, took part in two CUNY law clinics, seminars and lectures during her stay in the 'city that never sleeps'. She said: "Attending CUNY was truly inspirational."

The main clinic I took part in was Community Economic Development (CED), where I attended seminars with around 20 students and was largely based on group discussions and presentations from outside specialists. I also took part in mediation clinics which were extremely interesting because I was lucky enough to attend a civil night court in Jamaica Queens to watch how the mediation process took place. "The students and staff were incredible people and helped me make the most of my time in New York. Spending time with them reignited my passion and made me remember why I longed to pursue a career as a lawyer."

"They were a joy to watch as they had so much passion and enthusiasm for the work they were doing. Everyone at CUNY found it remarkable that Irwin Mitchell sponsored a scholarship and said it showed a real sense of community, and I couldn't agree more." Victoria Murray, Programme Leader, commended Laura's attitude toward her placement. "Laura has been a great ambassador for Northumbria's School of Law. She has undertaken her placement with enthusiasm and taken full advantage of the numerous opportunities it offered."

We are immensely grateful to Irwin Mitchell for its continued support and sponsorship of the scholarship. We are proud of Northumbria School of Law's strong links with Irwin Mitchell and CUNY and hope future students can continue to benefit from this fantastic scholarship."



“My month in Singapore exposed me to everything from corporate to Sharia law. Working in such a wide range of departments really helped my understanding of the differences between jurisdictions. I regularly attended court, both locally and in the Supreme Court of Singapore. Being able to go to Singapore for a month was richly rewarding and I am extremely grateful to Mr W T Woon, the law firms in Singapore, and of course, Northumbria School of Law for giving me such an amazing opportunity.”

**Kirsty Adamson**



## Prizes

We have numerous prizes which are awarded for academic achievement. Prizes include monetary awards, placements with law firms, mini pupillages or vouchers.

### **How this enhances your employability:**

Having an academic prize on your CV demonstrates high level academic talents and any associated placement can be used to develop new skills in the workplace.

### **Where can you find out more?**

The full list of prizes is available online.

[northumbria.ac.uk/about-us/academic-departments/northumbria-law-school/awards-and-accolades-new/student-awards-prizes/](https://northumbria.ac.uk/about-us/academic-departments/northumbria-law-school/awards-and-accolades-new/student-awards-prizes/)

## Student Societies

We want our students to have the best possible university experience. Our societies promote social events helping you acquire essential skills whilst becoming part of the student community. As a member of the Law School you can join various law specific societies including The Grey Society (the largest society in the University, exclusively for Law students), Mock Trial Society and the Student Law Think Tank.

### **How this enhances your employability:**

Joining, or even leading, a student society develops a range of key attributes including time management, teamwork, communication and interpersonal skills.

### **Where can you find out more?**

Join up in Fresher's Week and look out for regular email updates from the societies.

# Employability and Leadership Attributes Portal

The online Portal has been designed to support development of your employability skills and leadership capability while studying at Northumbria. The Employability and Leadership Attributes describe the key skills, knowledge and behaviours required by an effective leader. They are intended to support the development and increase the employability of all students by:

- Providing a comprehensive, generic description of what good leadership looks like.
- Setting out a clear summary of the key skills, knowledge and behaviour students should focus on developing during their studies, which are transferable to the workplace.
- Providing an insight into the indicators of leadership potential which graduate employers look for during recruitment processes and the early years of the graduate's career.

#### **How this enhances your employability:**

The Portal raises your understanding of the core attributes needed to succeed and develops many of these key skills.

#### **Where can you find out more?**

Access the Portal via the elp.



## Specialist Careers Support from within the Law School

In addition to the central University careers support, the Law School provides a range of specialist support including:

#### **Law as a Business**

This short course raises your commercial awareness, develops your understanding of how law firms operate and the essential skills needed to succeed as a lawyer. Engagement with this course means you will be able to talk at interviews in an informed way about business issues.

#### **Guest speakers**

We organise guest lectures so you can discover new career opportunities, learn from a range of legal experts and graduate recruiters, and pick up top tips about how to succeed in the recruitment process.

#### **Practice interview scheme**

We have an established "practice interview" scheme to provide assistance to students who have an interview so you can polish your skills before you undertake the real thing.

#### **Professional Contacts Scheme**

Under this initiative we can put you in contact with a Northumbria Law School graduate who is now working in the legal field and other sought after professions.

#### **Professional Panels**

At the start of each academic year we invite local professionals to attend a careers panel. You have opportunity to ask questions and gain a deeper insight into how to succeed.

#### **How this enhances your employability:**

These initiatives heighten your understanding of how to succeed and bring you into contact with high achieving professionals.

#### **Where can you find out more?**

Consult the careers tab on the elp programme site for more information about the bespoke support available from within the Law School or contact Siobhan McConnell  
siobhan.mcconnell@northumbria.ac.uk



## Get in touch

For more detailed course information see  
[northumbria.ac.uk/coursesearch](https://northumbria.ac.uk/coursesearch)

If you require any additional information about entry requirements or the application process contact:

**T: 0191 227 3341**

**E: [er.admissions](mailto:er.admissions@northumbria.ac.uk)**

**@[northumbria.ac.uk](https://twitter.com/northumbrialaw)**

For further information about Northumbria Law School contact:

**T: 0191 227 4453**

**E: [law@northumbria.ac.uk](mailto:law@northumbria.ac.uk)**

 [@northumbrialaw](https://twitter.com/northumbrialaw)

 [facebook.com/northumbrialaw](https://facebook.com/northumbrialaw)

 Search Northumbria Law School